



# DSU III DBU

## Rackmount DSU/CSU with Switched Dial Backup

### Product Features

- Automatic switched DBU upon failure of dedicated service
- Two backup options available: V.34 analog and 1B+D ISDN
- Synchronous or a synchronous (including 57.6 kbps) modes of operation
- EIA-232 and V.35 DTE interfaces
- DTE-to-service rate matching feature allows slower DTE devices to communicate over higher rate service offerings
- Manual and automatic dialing capability
- Auto answer of incoming calls
- Industry-leading five-year North American warranty

**The ADTRAN® DSU III DBU™ RM, a feature-rich rackmount data service unit/channel service unit (DSU/CSU), provides an interface between the digital data service (DDS) and the customer's data terminal equipment (DTE) while providing automatic switched dial backup (DBU) of the dedicated circuit.**

The DSU III DBU offers two DBU options: V.34 analog, and 1B+D ISDN. When the DSU III DBU is configured for dedicated service with switched DBU, the network manager can adjust and configure the parameters which control when a dial backup is initiated. As the primary line degrades beyond the configured performance level or fails, the DSU automatically initiates connection to the remote unit over the switched network. Upon restoration of the primary DDS circuit, the unit reverts to the primary DDS circuit either automatically or manually as configured by the network manager.

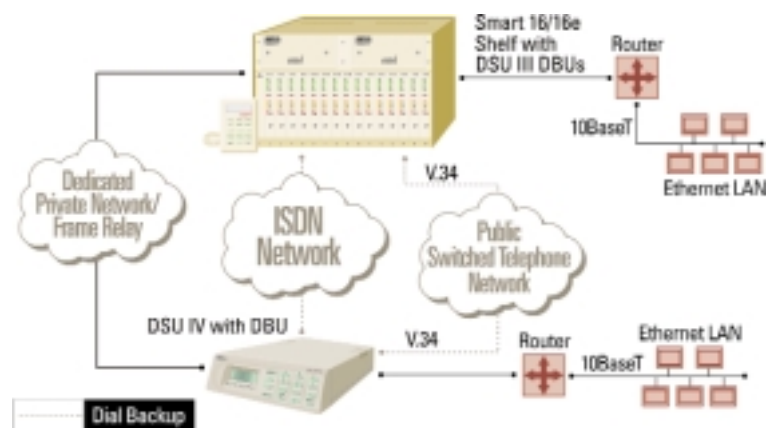
The DSU III DBU supports synchronous operations at rates of 2.4, 4.8, 9.6, 19.2, 38.4, 56 and 64 kbps and asynchronous data rates of 2.4, 4.8, 9.6, 19.2, 38.4, and 57.6 kbps. The DTE interface can be selected as either EIA-232 or V.35 for all data rates. The DSU III DBU

also provides DTE-to-service rate matching, for dedicated and switched DBU modes. This feature allows slower rate DTE equipment to communicate over a higher speed digital line.

The DSU III DBU requires an ADTRAN Smart 16/16e shelf which is available in AC or DC versions with single or dual power inputs for greater reliability. The DSU III DBU can be configured through the Smart 16/16e shelf controller card from a local/remote VT 100 terminal or from an ADTRAN DATAMATE™. The DSU III DBU can also be configured using AT or V.25 bis commands. In a Smart 16e shelf, the DBU card can be configured with a remote telnet session via the 10Base-T Ethernet port.

The DSU III DBU supports standard loop-back commands from the telephone company central office for testing. Front panel LEDs display test status, alarms, and errors during a test and DBU session. Automatic service rate and pair reversal detection enable quick and easy installation.

The DSU III rackmount card is also available without a DBU option.





ADTRAN, Inc.

Attn: Enterprise Networks  
901 Explorer Boulevard  
Huntsville, AL 35806

P.O. Box 140000  
Huntsville, AL 35814-4000

256 963-8000 voice  
256 963-8699 fax  
256 963-8200 fax back

**General Information**  
800 9ADTRAN  
info@adtran.com  
www.adtran.com

**Pre-Sales  
Technical Support**

800 615-1176 toll-free  
application.engineer@adtran.com  
www.adtran.com/support

**Where to Buy**

877 280-8416 toll-free  
channel.sales@adtran.com  
www.adtran.com/where2buy

**Post-Sales  
Technical Support**

888 423-8726  
support@adtran.com  
www.adtran.com/support

**ACES Installation &  
Maintenance Service**

888 874-ACES  
aces@adtran.com  
www.adtran.com/support

**International Inquiries**

256 963 8000 voice  
256 963-6300 fax  
international@adtran.com  
www.adtran.com/international

**For the regional office  
nearest you, visit:**

www.adtran.com/where2buy



ADTRAN is an  
ISO 9001:2000 certified supplier.



ADTRAN is a  
TL 9000 3.0 certified supplier.

61200076L1-8A May 2002  
Copyright © 2004 ADTRAN, Inc.  
All rights reserved.

# DSU III DBU

## Rackmount DSU/CSU with Switched Dial Backup

### Product Specifications

#### Operating Modes

- Dedicated DDS
- Dedicated DDS with automatic switched DBU

#### Switched Dial Backup

- Automatic or manual
- V.34 Analog
- ISDN (1B+D)

#### Network Data Rates

- **Dedicated mode service rates:** 2.4, 4.8, 9.6, 19.2, 38.4, 56 and 64 kbps
- **Dial backup:** V.34 (2.4/33.6 kbps), ISDN (64 kbps)

#### DTE Rates

- DTE-to-loop rate matching in both dedicated and switched backup modes
- **Synchronous rates:** 2.4, 4.8, 9.6, 19.2, 38.4, and 56 kbps
- **Asynchronous rates:** 2.4, 4.8, 9.6, 19.2, and 57.6 kbps

#### DTE Interface

- Both EIA-232 and V.35 electrical and physical DTE interfaces

#### Line Requirements

##### Loop transmission parameters as defined in:

- **AT&T PUB 62310:** Dedicated DDS

#### Receiver sensitivity:

- -45dB @ all rates

#### Line interface:

- RJ-48S, 4-wire, full duplex

#### Diagnostics

##### Network

- CSU and DSU loopbacks

##### User

- Local DTE and loop, remote V.54

##### Test patterns

- 2047, 511, DDS stress patterns 1-4

#### Environment

##### Operating Temperature

- 0° to 50° C, (32° to 122° F)

##### Storage Temperature

- -20° to 70° C, (-4° to 158° F)

##### Relative Humidity

- Up to 95%, non-condensing

#### Physical

##### Dimensions

- 1" H, 6.75" W, 10.5" D

##### Weight

- 1.5 lbs

##### Power

- 8 watts

#### Product Includes

- Two 8-pin to 8-pin modular cables
- User manual

### Ordering Information

Equipment	Part #
DSU III RM (No DBU)	1200034L1
DSU III DBU RM (ISDN)	1200067L1
DSU III DBU RM (V.34)	1200172L2

Smart 16/16e Shelves	Part #
Smart 16 Shelf (AC) Single-feed	4202023L1
Smart 16 Shelf (AC) Dual-feed	4202023L2
Smart 16 Shelf (DC) Single-feed	4202023L3
Smart 16 Shelf (DC) Dual-feed	4202023L4
Smart 16e Shelf (AC) Single-feed w/SNMP	4202023L5
Smart 16e Shelf (AC) Dual-feed w/SNMP	4202023L6
Smart 16e Shelf (DC) Single-feed w/SNMP	4202023L7
Smart 16e Shelf (DC) Dual-feed w/SNMP	4202023L8
Redundant AC Power Supply	1200048L3
Redundant DC Power Supply	1200048L4
DATAMATE	1200045L1



Specifications subject to change without notice. DATAMATE and DSU III DBU are trademarks of ADTRAN, Inc. ADTRAN is a registered trademark of ADTRAN, Inc. All registered trademarks and trademarks mentioned in this publication are the property of their respective owners.