

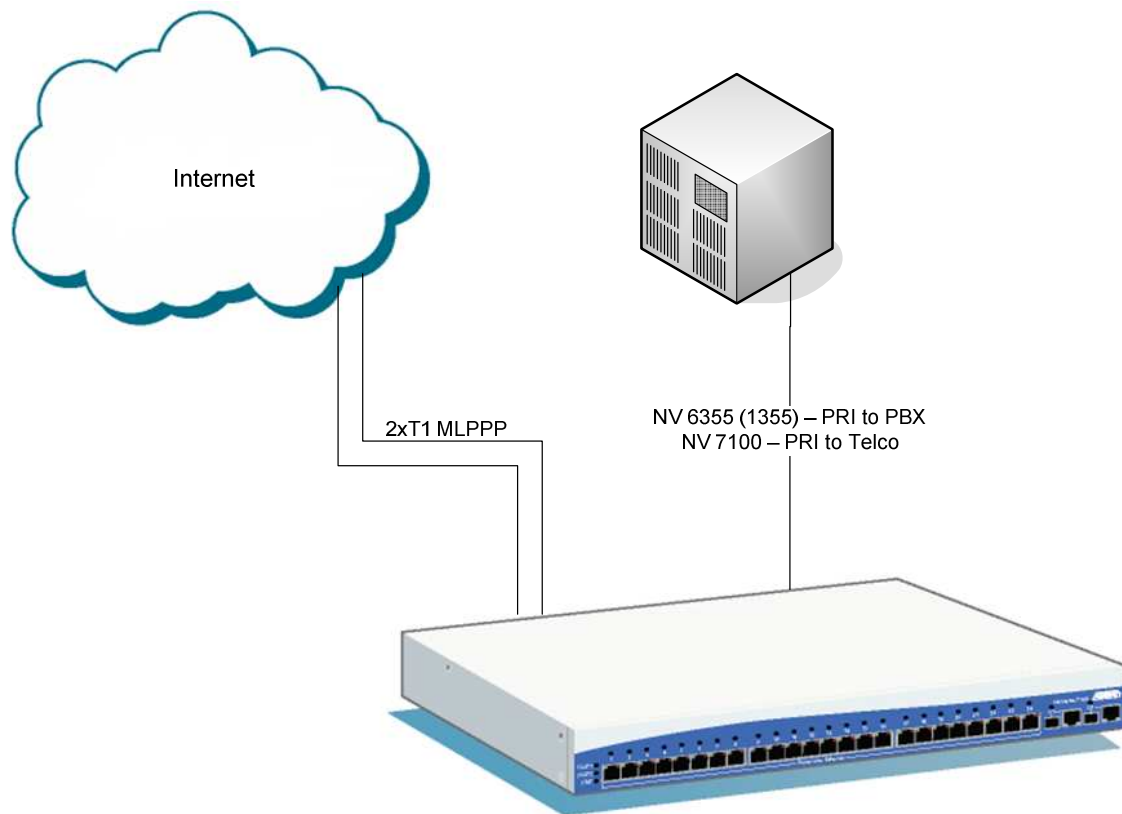
Configuring T1 timing on the NetVanta 6355 (1355) & 7100 with a PRI or CAS T1

Overview:

The NetVanta 6355 (1355) and NetVanta 7100 can have up to two independent T1 clock sources when a PRI is used. One clock will be for the T1/PRI VIM, and the other clock will be for the T1, T1/DSX, or Dual T1 NIM.

This guide will focus on the application with a Dual T1 NIM and a T1/PRI VIM, but the configuration would be similar if a T1 NIM or T1/DSX NIM was used in place of the Dual T1 NIM.

In this example, timing is being provided by the ISP on both T1s in the MLPPP bundle.



Configuration Steps:

1. Configure the timing on the Dual T1 NIM (in Slot 1 for this guide)
2. Configure the timing on the T1/PRI VIM (in Slot 2 for this guide)
 - a. NetVanta 6355 (1355) providing timing to a PBX
 - b. NetVanta 7100 taking timing from telco
3. Configure the system timing source for the voice subsystem

Configuring the timing on the Dual T1 NIM (in Slot 1 for this guide)

1. Enter global configuration mode by typing
config t
2. Enter the interface configuration for the first T1 on the Dual T1 NIM by typing
int t1 1/1
3. Set the T1 interface to take clocking from the line by issuing the following command
clock source line
4. Enter the interface configuration for the second T1 on the Dual T1 NIM by typing
int t1 1/2
5. Set the T1 interface to take clocking from the first T1 port (t1 1/1) by issuing the following command
clock source through

Configuring the timing on the T1/PRI VIM (in Slot 2 for this guide)

Scenario A – NetVanta 6355 (1355) providing timing to a PBX

1. Enter the interface configuration for the T1/PRI VIM by typing
int t1 2/1
2. Set the T1 interface to provide clocking by issuing the following command
clock source internal

Scenario B – NetVanta 7100 taking timing from telco

1. Enter the interface configuration for the T1/PRI VIM by typing
int t1 2/1
2. Set the T1 interface to provide clocking by issuing the following command
clock source line

Configuring the system timing source for the voice subsystem

1. Enter the interface configuration for the T1/PRI VIM by typing
int t1 2/1
2. Set the T1 interface to provide clocking by issuing the following command
system-timing primary