

Documentation for ADTRAN Carrier Networks products is available for viewing and download directly from the ADTRAN Support Community website.

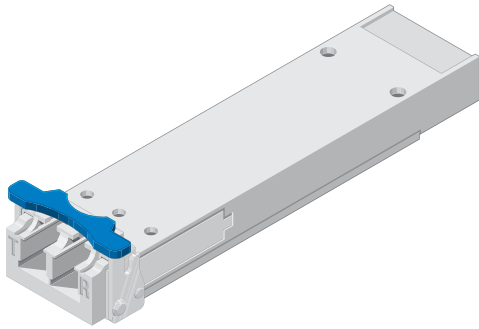
Go to: <https://supportforums.adtran.com/welcome>

Registration is required.

ADTRAN offers training courses on our products, including customized training and courses taught at our facilities or at customer sites.

For inquiries, go to: <http://adtran.com/training>

The following documents provide additional information for this product:
SFP/XFP/SFP+ Compatibility Matrix and Engineering Guide



DESCRIPTION

The 10 Gigabit Ethernet 20 Km XFP, 1310,(XFP) optical transceiver is a fully duplex serial electric, serial optic device. It has both transmit and receive functions and provides a high speed serial link at 10 Gb/s. Installed into an appropriate host module, the XFP provides a 10 Gigabit interface to the supporting system.

The transmit side of the XFP converts serial NRZ electrical data at the 10 Gb/s line rate to a standard compliant optical signal. The receive side of the XFP converts the incoming DC balanced serial NRZ optical data at the 10 Gb/s line rate into serial electrical data.

NOTE

To ensure compatibility, refer to the documentation provided with the host module.

FEATURES

The following features are supported on the XFP:

- 1310 nm optical signals for up to 20 km reach
- Low power consumption (<2.5 W max for 20 Km)
- Bit error rate (<1x10⁻¹²)
- Excellent EMI performance

CAUTION

Due to compliance certification requirements, only XFPs supplied by ADTRAN are to be used with the host module. ADTRAN cannot certify system integrity with other XFPs.

INSTALLATION

Before installation, inspect the XFP. If damage has occurred during shipping, file a claim with the carrier, and then contact ADTRAN Customer Support. For more information, refer to "Warranty".

Installation Guidelines

The following are guidelines for this installation.

- The latch on the XFP is for removal only. When removing the XFP, rotate the latch away from the XFP. The XFP should slide easily out of the cage.
- It is recommended that the connector plug remain on whenever the transceiver optical fiber connector is not inserted.

Installation Steps

To install the XFP, complete the following steps:

1. Insert the XFP into the XFP cage on the circuit board of the host module with the latch handle facing outward. Slide the XFP all the way into the cage.
2. Exert adequate pressure to ensure the XFP is completely seated in the XFP cage.
3. Do not remove the connector plug until the optical fiber connection is made.
4. Continue the installation and turn-up of the host module.

SPECIFICATIONS

- Optical Specifications:
 - ◆ Transmit wavelength: 1310 nm
 - ◆ Receive wavelength: 1260 to 1355 nm
 - ◆ Data rate: 9.95 Gb/s to 10.30 Gb/s
 - ◆ Optical transmit level: -6.2 to 0.5 dBm
 - ◆ Optical receive level sensitivity: -14.6 dBm
 - ◆ Optical distance: 20 km maximum
 - ◆ Optical connectors: LC
- Extended Environmental Support:
 - ◆ Operational temperature range: -40°C to +65°C
 - ◆ Storage temperature range: -40°C to +85°C
 - ◆ Relative humidity to 85%, noncondensing

SAFETY AND REGULATORY COMPLIANCE

Refer to the *Safety and Regulatory Compliance Notice* for this product (P/N 61442920G1-17) for detailed safety and regulatory information.

Consultez L'avis sur la Sécurité et la Conformité à la Réglementation pour ce produit (61442920G1-17) pour obtenir des renseignements détaillés sur la sécurité et la réglementation.

Ausführliche sicherheits und regulatorische informationen sind in der Konformitätserklärung zur Sicherheit und Einhaltung von Normen zu diesem Produkt (61442920G1-17) aufgeführt.



Warranty: ADTRAN will replace or repair this product within the warranty period if it does not meet its published specifications or fails while in service. Warranty information can be found online at www.adtran.com/warranty.



ADTRAN CUSTOMER CARE:
From within the U.S. 1.800.726.8663
From outside the U.S. +1 256.963.8716
PRICING AND AVAILABILITY 1.800.827.0807

