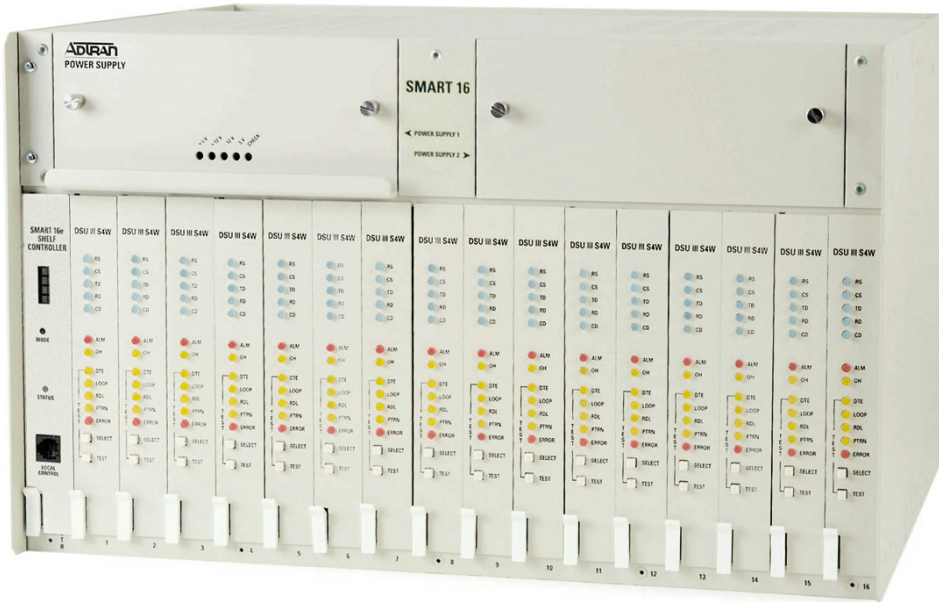


Smart 16/16e Shelf

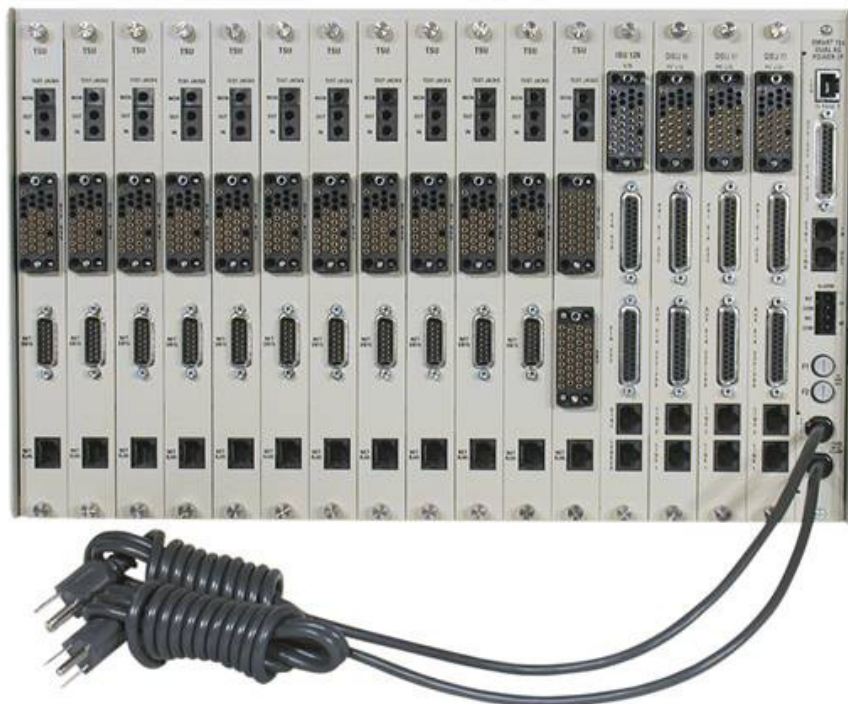
2nd Gen

Central Site Rackmount Shelf

Front View



Rear View (Dual AC Shown)



Rear Panel Connections

- VT1000 Control Port
- Ethernet 10BaseT (SNMP Controller Only)
- Chain In and Chain Out Ports
- Alarm Terminal Block

Physical Specifications

- Chassis: Rackmount
- Dimensions: 10.5" H, 17.25" W, 14.875" D
- Weight: 20 lbs Empty, 45 lbs Full
- Operating Temperature: 32°F to 122°F (0°C to 50°C)

User Modules

- **TSU V.35 Rackmount**
 - Single T1 WAN Interface
 - Single V.35 DTE Interface
 - Synchronous Rates in Increments of 56k or 64k up to 1.536 Mbps
 - Framing SF/ESF
 - Line Code AMI/B8ZS
 - T1 Timing: Loop, Internal, or DTE
- **T1 ESF CSU Rackmount**
 - Line Rate 1.544 Mbps
 - Transparent To PRI Signaling
 - Framing SF/ESF
 - Line Code AMI/B8ZS
- **TSU IQ Rackmount (Discontinued)**
 - Single T1 WAN Interface
 - Single V.35 DTE Interface
 - Frame Relay-aware DSU/CSU with embedded SNMP
 - Gathers Layer 1-3 Statistics
 - Provides Dial Optional Dial Backup
- **DSU III DBU V.34 Rackmount (Discontinued)**
 - All Rate DSU/CSU
 - Synchronous Rates from 2.4 kbps to 57.6 kbps
 - EIA 232 and V.35 DTE Interfaces
- **TSU 530 Rackmount (Discontinued)**
 - Single T1 WAN Interface
 - Single EIA-530 DTE Interface
 - Synchronous Rates in Increments of 56k or 64k up to 1.536 Mbps
 - Framing SF/ESF
 - Line Code AMI/B8ZS
 - T1 Timing: Loop, Internal, or DTE
- **DSU III TDM Rackmount (Discontinued)**
 - Provides Four EIA 232 DTE Connections, V.35 Adapters Available
 - Port 1: 2.4 – 64 kbps Synchronous or 2.4 – 57.6 kbps Asynchronous
 - Ports 2, 3, 4 : 2.4 – 38.4 kbps Synchronous or Asynchronous
- **DSU III AR Rackmount (Discontinued)**
 - Synchronous Rates: 2.4, 4.8, 9.6, 19.2, 38.4, 56 and 64 kbps
 - Asynchronous Rates: 2.4, 4.8, 9.6, 19.2, 38.4, 57.6 kbps
- **ISU 128 Rackmount (Discontinued)**
 - Single ISDN Basic Rate U-Interface
 - EIA-530, EIA-232, and V.35 DTE Interfaces
 - 2400 kbps to 128 kbps Synchronous
 - 300 kbps to 115.2 kbps Asynchronous
 - ISDN Switch Types: National ISDN 1, Lucent 5ESS, Nortel DMS100, NEC

User Modules (Continued)

- **ISU 2X64 Rackmount (Discontinued)**
 - Single ISDN Basic Rate U-Interface
 - Two DB-25 DTE Interfaces: Each can be EIA-530 or EIA-232 V.35 DTE Interfaces available with adapters
 - 2400 kbps to 128 kbps Synchronous
 - 1200 kbps to 115.2 kbps Asynchronous
 - ISDN Switch Types: National ISDN 1, Lucent 5ESS, Nortel DMS100, NEC

Power Specifications

- AC Power: 120 VAC, 250 W, 860 BTU
- DC Power: 48 VDC, 250 W, 860 BTU

Agency Approvals

- FCC part 15 Class A, FCC Part 68
- UL 1950, CUL

Warranty

- 5 Year (Repair & Return)
- www.ADTRAN.com/Warranty

Product Includes

- All Smart 16 units ship with the following:
 - Smart 16 Chassis
 - Smart 16/16e Controller Card
 - AC or DC Power Card
 - User Manual

Ordering Information

TDU 120e	Part Number
Smart 16 Shelf (AC) Single Feed	4202023L1
Smart 16 Shelf (AC) Dual Feed	4202023L1
Smart 16 Shelf (DC) Single Feed	4202023L3
Smart 16 Shelf (DC) Dual Feed	4202023L4
Smart 16e Shelf (AC) Single Feed	4202023L5
Smart 16e Shelf (AC) Dual Feed	4202023L6
Smart 16e Shelf (DC) Single Feed	4202023L7
Smart 16e Shelf (DC) Dual Feed	4202023L8

Modules & Accessories	Part Number
DSU III AR	1200034L1
DSU III DBU V.34	1200172L2
T1 ESF CSU ACE	1202066L1
TSU V.35	1202077L1
TSU 530	1200099L1
TSU IQ	1200277L1
ISU 128	1200087L1
ISU 2X64	1200074L1
Redundant AC Power Supply	1202048L1
Redundant DC Power Supply	1200048L4
DATAMATE	1200045L1
Rackmount Display 1U High	1200045L1

DISCLAIMER

ADTRAN provides the foregoing application description solely for the reader's consideration and study, and without any representation or suggestion that the foregoing application is or may be free from claims of third parties for infringement of intellectual property rights, including but not limited to, direct and contributory infringement as well as for active inducement to infringe. In addition, the reader's attention is drawn to the following disclaimer with regard to the reader's use of the foregoing material in products and/or systems. That is:

ADTRAN SPECIFICALLY DISCLAIMS ALL WARRANTIES, EXPRESSED OR IMPLIED, INCLUDING BUT NOT LIMITED TO, MERCHANTABILITY AND FITNESS FOR A PARTICULAR PURPOSE. IN NO EVENT SHALL ADTRAN BE LIABLE FOR ANY LOSS OR DAMAGE, AND FOR PERSONAL INJURY, INCLUDING BUT NOT LIMITED TO, COMPENSATORY, SPECIAL, INCIDENTAL, CONSEQUENTIAL, OR OTHER DAMAGES