



Using T-Watch Pro to save and load configuration of a TSU Metal, TSU LT, TSU ESP, or TSU Multiport Unit

Introduction

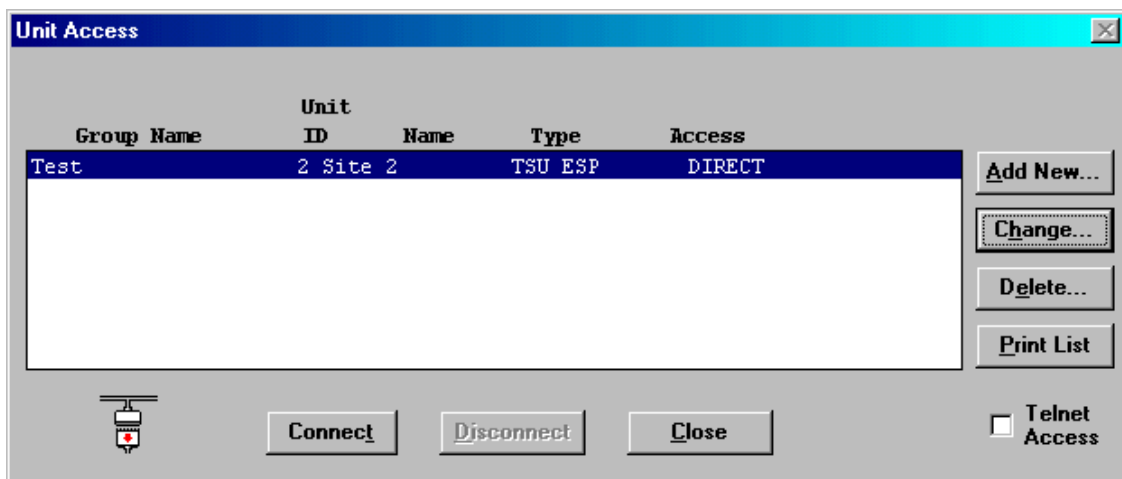
This Technical Support Note will guide you through using the T-Watch Pro configuration management software to save and restore TSU Metal, TSU LT, TSU ESP, or TSU Multiport configurations.

Before You Begin

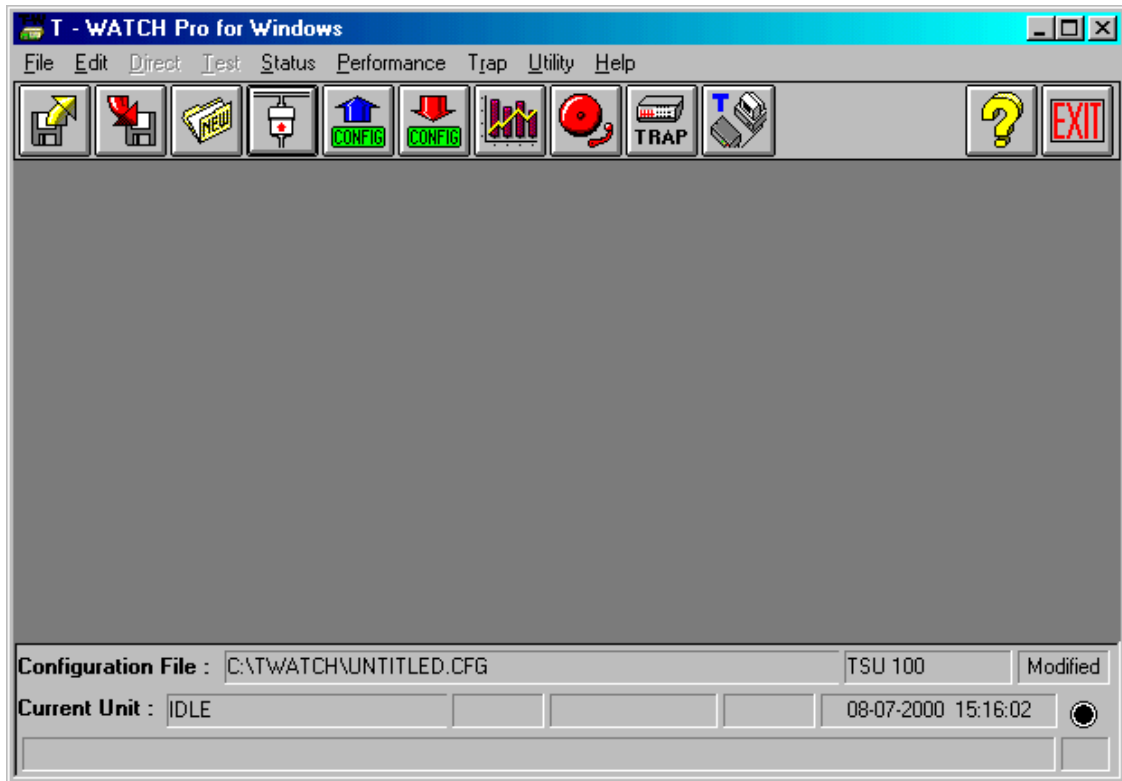
In order for T-Watch Pro to connect to a TSU product, the unit's **Unit ID** and **Passcode** must both be set. For information on connecting to an ADTRAN TSU product using T-Watch Pro configuration management software, please see KB Article # 1582.

Saving Configurations with T-Watch Pro

1. Run the T-Watch Pro software.
2. Select **File** from the menu bar and then **Unit Access** to open the **Unit Access Table**.
3. Select the unit that you wish to access from the **Unit Access Table** and click **Connect**.



4. Click the **Config** button with the blue up arrow to load the configuration into the **Active Workspace**.



5. Click **File** then **Save Configuration**.
6. Choose a filename, such as TSU.cfg, and click **OK**.

Loading Configurations with T-Watch Pro

1. Follow Steps 1 and 2 from **Saving Configurations with T-Watch Pro** to connect to the unit.
2. Click **File** then **Load Configuration**.
3. Choose the file that you wish to load into the **Active Workspace** and click **OK**.
4. Click the **Config** button with the red down arrow to transfer the configuration file from the **Active Workspace** to the unit.

Printing Configuration with T-Watch Pro

1. Follow Steps 1 and 2 from **Saving Configurations with T-Watch Pro** to connect to the unit and load the configuration to the **Active Workspace**.
2. Click **File** then **Print Unit Configuration** to print the current configuration.