



ADVISION

SNMP Network Management Application

Product Features

- Easy to use SNMP application with graphical user interface (GUI)
- Integrated into HP OpenView's UNIX
- Automatic device discovery
- Comprehensive trap and alarm processing
- Color coded device specific symbols indicate network status
- View, modify, save and apply device configuration
- Complete diagnostic control
- Detailed status information
- Performance graphs

ADTRAN's **ADVISION™** is a comprehensive network management application that integrates into Hewlett Packard's OpenView® platform. ADVISION is the tool that helps control, configure, and monitor ADTRAN SNMP data communication products. With a few clicks of a mouse button, a network manager can reconfigure a WAN link or diagnose an entire network. Networks that include DDS, Switched 56, ISDN, Frame Relay, T1 and T3 are now easily controlled through a single management station. The easy to use graphical user interface (GUI) virtually eliminates costly training associated with other platforms.

ADVISION allows OpenView to automatically discover ADTRAN® devices and place them into the appropriate submap with an ADTRAN specific symbol. ADVISION interprets traps received by OpenView, and sets the color of the symbol to the severity level of any error condition, allowing a network manager to quickly determine the status of a particular device. Should a device require configuration, the GUI provides access to configuration information which can be viewed and modified through a series of pull-down and pop-up menus. The device specific GUI displays animated graphical representations of devices, both front and rear views, assisting with field installations or diagnostics.

Activation of the application GUI only requires a simple point and click of a mouse. Once activated, a network

manager has complete access to all features supported by the ADTRAN SNMP devices. System resources on the management platform are conserved by limiting use to that needed during active management.

ADVISION lets network managers interrogate networks, gathering information necessary to assess and assure performance. The GUI structure allows access to detailed status and performance information which is invaluable when evaluating overall network health. A wide range of device specific loopback and pattern tests are also available to assist in performance monitoring and to pinpoint trouble spots.

ADVISION is suited for both small and large networks where real time access to network status is mission critical. ADTRAN® continues to offer complete network solutions with ADVISION and ADTRAN's SNMP products. ADVISION is your vision for ADTRAN networking products.



ADVISION

ADTRAN, Inc.

Attn: Enterprise Networks
901 Explorer Boulevard
Huntsville, AL 35806

P.O. Box 140000
Huntsville, AL 35814-4000

256 963-8000 voice
256 963-8699 fax
256 963-8200 fax back

General Information

800 9ADTRAN
info@adtran.com
www.adtran.com

Pre-Sales

Technical Support

800 615-1176 toll-free
application.engineer@adtran.com
www.adtran.com/support

Where to Buy

877 280-8416 toll-free
channel.sales@adtran.com
www.adtran.com/where2buy

Post-Sales

Technical Support

888 423-8726
support@adtran.com
www.adtran.com/support

ACES Installation & Maintenance Service

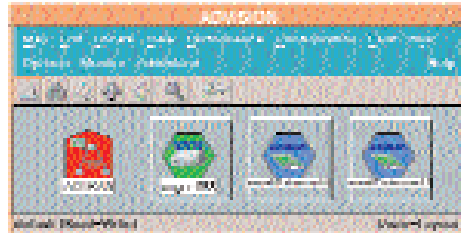
888 874-ACES
aces@adtran.com
www.adtran.com/support

International Inquiries

256 963 8000 voice
256 963-6300 fax
international@adtran.com
www.adtran.com/international

For the regional office nearest you, visit:

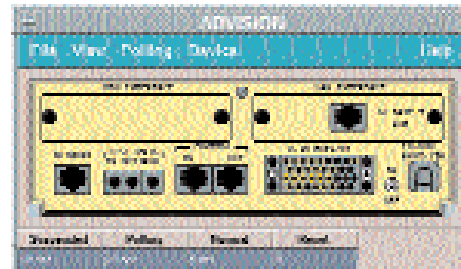
www.adtran.com/where2buy



The OpenView submap for the DSU IV ESP. When HP OpenView discovers an ADTRAN SNMP device, ADVISION populates the submap with executable symbols for status reporting and GUI launching.



The TSU ESP front view. This view of the device front panel is animated with colored LEDs to reflect the current status of the device.



The TSU ESP rear panel. This rear view of the device shows what option cards are installed, and permits menu selections of the device or the option card.

Product Specifications

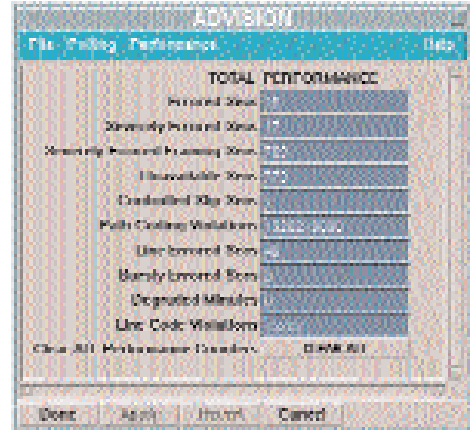
System Requirements

- HP 9000/700 with HP-UX 10.20
- Sun Sparc with Solaris 2.5.1
- HP OpenView Network Node Manager 4.11
- 256 color display
- CD drive

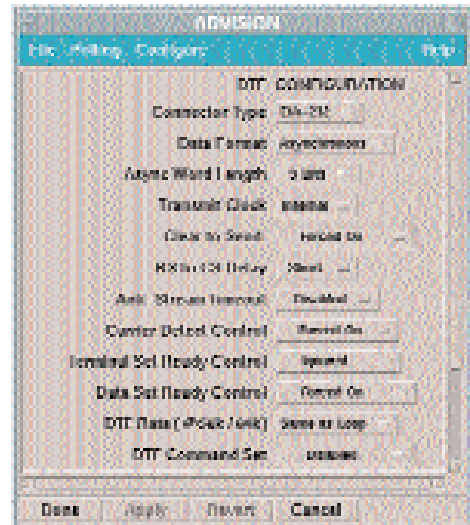
Ordering Information

Equipment	Part #
ADVISION for UNIX	1950025L1

Specifications subject to change without notice.
ADTRAN is a registered trademark of ADTRAN, Inc.



DS1 Performance display. ADVISION provides access to performance information that can be stored and used to track historical performance of the network.



A DSU ESP configuration dialog. The specific device can be configured through a series of dialog boxes. Buttons provide multiple choice selections for ease of use.



DS1 Line Status. Through a series of status screens the current device status can be displayed for pinpointing network problems.



ADTRAN is a
ISO 9001 registered company.



ADTRAN is a
TL 9000 registered company.

Printed in the U.S.A.
61950025L1-8F May 2002
©2002 ADTRAN, Inc. All rights reserved.