



Using ADTRAN ISU and Express Products With Carbon Copy™ Version 3.0

Introduction

This Technical Support Note describes the configuration process for ADTRAN ISU® Express XR® and XRT® devices into Carbon Copy™ for Windows® Version 3.0 software by Microcom®.

Before You Begin

- This Technical Support Note assumes that you have already installed the Carbon Copy software on both the host and the client computers. It also assumes that, if you are using Windows 95, you have already installed the inf file and have installed the ISU support into Windows 95 (see KB Article # 1549).
- This note will discuss settings for two different profiles: Fallback (57.6 or 115.2 kbps) and V.120 (64 kbps).
- Your PC hardware also affects your throughput. If the COM port connected to the Express does not have at least a 16550 UART chip, it will adversely affect the performance of your application for baud rates of over 19.2 kbps. For rates over 19.2 kbps, you need to purchase an add-on card with the 16550 UART chipset.
- The Windows 3.x COM drivers do not support 115.2 kbps. In order to run 115.2 kbps on Windows 3.x, it will be necessary to install a third party COM driver that will support high speeds. If you do not have a high-speed COM driver for Windows 3.x, the fastest baud rate allowed is 19.2 kbps.

Express XR/XRT Setup

If installing an Express XR/XRT for the first time, use the ADTRAN Express Configuration Wizard software to automatically setup your Service Profile Identifier (SPID) number(s) and switch type.

Note: You must enter your correct area code and phone numbers for auto-SPID to perform correctly.

Installing ISU Support In Carbon Copy Version 3.0 Software

To set up the Carbon Copy software for use with the Express XR/XRT products, do the following:

1. In the Microcom Descriptor Editor, highlight the **MNP Compatible** entry and click on the **Copy** button as shown in Figure 1.

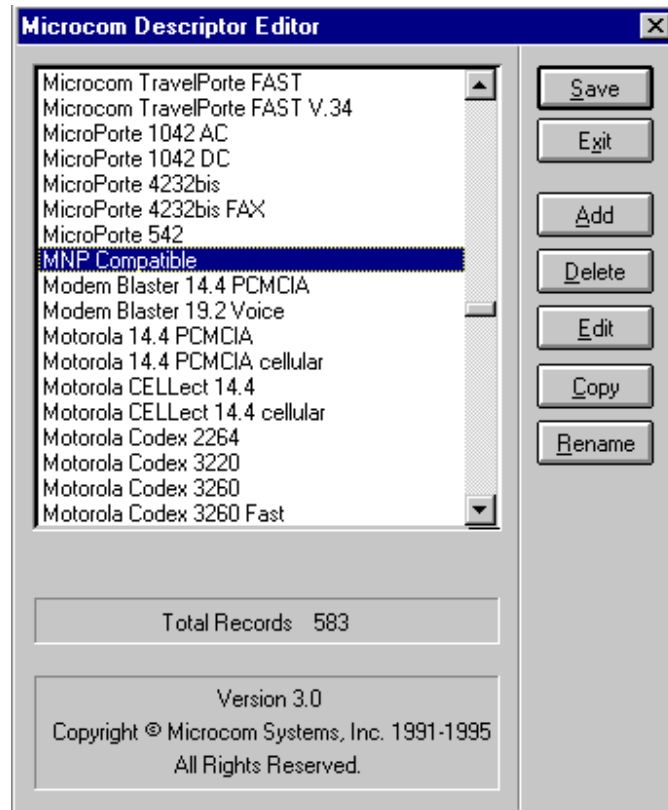


Figure 1: Choose MNP Compatible from the Microcom Descriptor Editor

2. Name the Modem Descriptor ADTRAN ISU Express XR/XRT as in Figure 2.

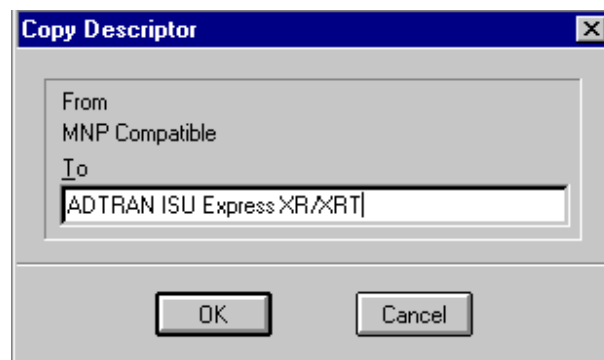


Figure 2: Name the new Device Entry

3. Highlight the ADTRAN ISU Express XR/XRT entry and click on **Edit**.
4. In the Editor Descriptor (shown in Figure 3) enter the strings in the **Reset #1** and **Reset #2** text fields that correspond to the call type that you are using. Initialization strings are included for the following call types:

- **115.2 kbps using the fallback protocol**
Reset #1 : !atAT&F!cr
Reset #2 : !atATE0&D2!cr
- **64 kbps using the V.120 protocol**
Reset #1 : !atAT&F3!cr
Reset #2 : !atATE0&D2!cr

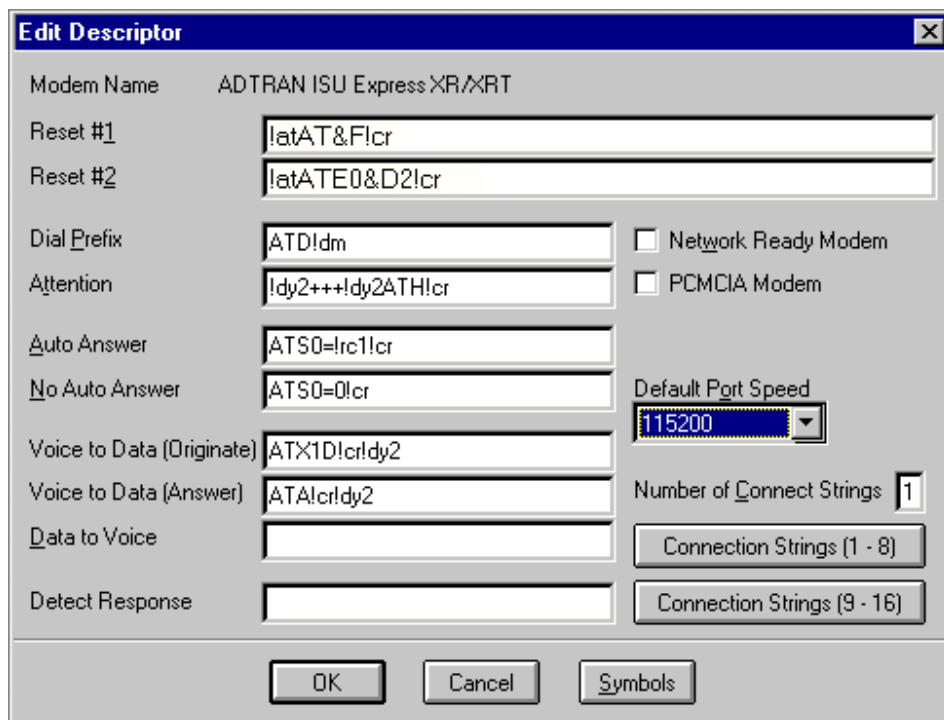


Figure 3: The init Strings you use will Depend on the Call Type that you use

5. Click on the **OK** button in the Edit Descriptor Window.
6. In the Modem Descriptor Window, click on the **Save** button.
7. Next click the **Exit** button.
8. From the Carbon Copy program group (shown in Figure 4), double-click on the **Guest** icon to bring the client interface. If this is the host machine, the same configuration may be done using the **Host** icon.

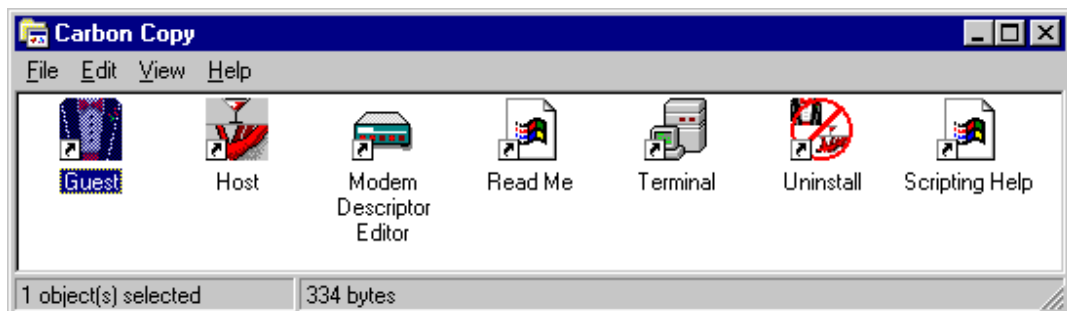


Figure 4: The Carbon Copy Program Group

9. Once the Carbon Copy Guest is open, select **Communications** from the **Options** menu as in Figure 5.



Figure 5: Carbon Copy Guest control panel

10. Select Serial Port and click on the **Setup** button in the Communications window as in Figure 6.

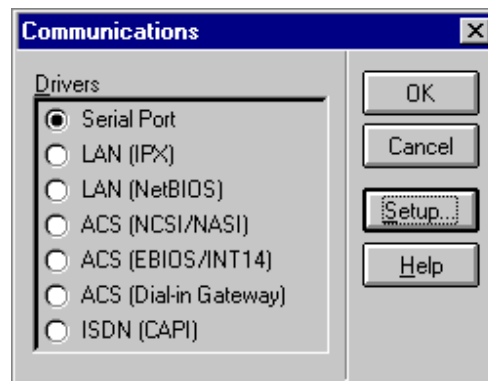


Figure 6: Click on Setup

11. In the Serial Port Setup dialog box (see Figure 7), choose the **ADTRAN ISU Express XR/XRT** modem that you created in step 2.

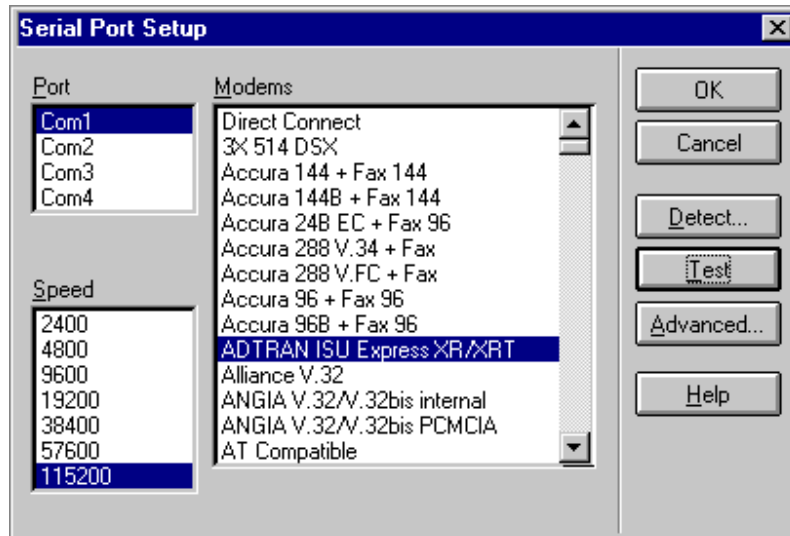


Figure 7: Choose the Express XR/XRT that you Created Earlier

12. Click on the **T**est button from the Serial Port Setup screen. Carbon Copy should come back with the screen shown in Figure 8 if the reset strings were entered properly.

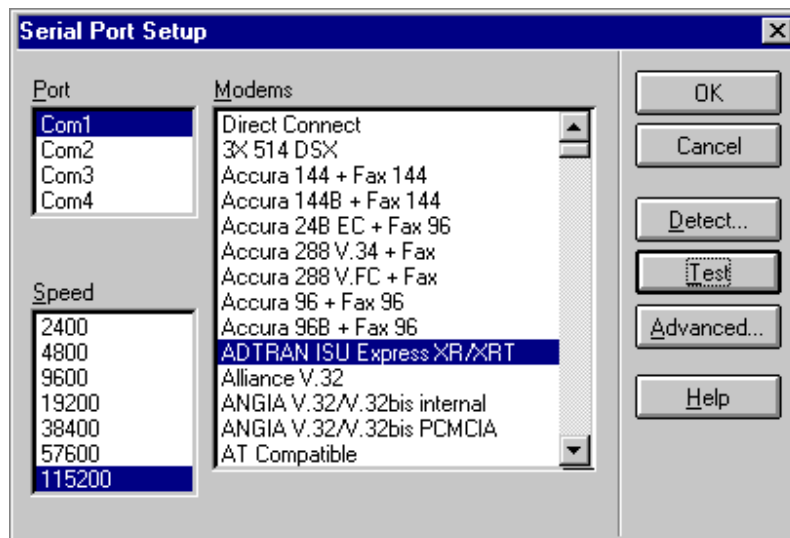


Figure 8: Your Communications Setup is Correct

Note: Carbon Copy is only testing to make sure that the Express accepts the commands. It is possible to send commands to the Express that the unit will accept, but will not allow you to connect with another ISU unit.

13. Click on **OK** three times to return to the Carbon Copy Guest viewer.

Your client computer should now be setup to run Carbon Copy with your ISU Express XR/XRT product. Repeat these steps on the machine that will be acting as the host. All steps are similar to the Guest setup, except that you will be using the **Host** icon in step 8.

*Carbon Copy is a trademark and Microcom is a registered trademark of Microcom Systems, Inc.
Windows and Microsoft are registered trademarks of Microsoft Corporation.*