



Adding Support for ADTRAN ISDN Products to Microsoft Windows® 95, 98 and NT 4.0 Operating System

Introduction

This Technical Support Note will allow support of ADTRAN ISDN products with Microsoft Windows 95, Windows 98 and Windows NT 4.0 for high-speed data communication.

Before You Begin

- Your PC hardware affects your throughput. If the COM port connected to the ADTRAN device does not have at least a 16550 UART chip, it will adversely affect the performance of your application for baud rates of over 19.2 kbps. For rates over 19.2 kbps, you need to purchase an add-on card with the 16550 UART chipset.
- If your terminal adapter is not set up to run MP or BONDING (it is only connecting on one bearer channel), or your Internet provider only allows access on one bearer channel, then setting your serial port to a baud rate of 115.2 kbps may allow you to improve your throughput. In some cases, doing this will allow the full use of the 64 kbps bearer channel, instead of using a baud rate of only 57.6 kbps.
- In order to place calls at 230.4 kbps, you are required to have a 16650 UART on your COM port.

Installing ISU Support into Windows

ADTRAN products may be used with Windows 95, 98 and NT 4.0, but must be manually selected using the Windows control panel for the device type. The .inf file is required for Plug-and-Play and non-Plug-and-Play devices.

Modem information files (.inf files) are used to define the characteristics of modems and the commands that control modems attached to a PC running the Windows operating system. In other words, it allows the Windows software to use the settings of a specific device.

Attached is the file mdmadtn.inf. Installing this file on your computer allows your Windows system to communicate using an ADTRAN ISDN product as if it is an analog modem.

After installing the mdmadtn.inf file, Windows will support Plug-and-Play for the ADTRAN ISDN products. Plug-and-Play allows Windows to automatically detect an ISU unit that is properly attached to the PC through a serial port. After detecting a device, Windows uses the information in the respective .inf file to initialize and use that device.

The following steps may be performed prior to plugging ADTRAN ISDN product into the system to install the necessary device support for the ISU unit. If you plug the Express in before you perform the .inf installation, Windows will ask you to provide an .inf file for the Express. If you follow the prompts, you should not have any problems. However, the following steps detail a known good path to configure the ISU unit.

1. To install ISU support on Windows, download the ADTRAN INF file.
2. Go to **Control Panel**. The **Control Panel** may be found in **My Computer**, or click on the **START** button with the left mouse button and hold it while moving the pointer to **S**ettings and then over to **C**ontrol Panel. Then release the button.
3. Double-click on the **Modem** icon in **Control Panel** (see **Figure 1**).



Figure 1: Modems in the Control Panel

4. Click on **Add...** in the **Modems Properties** screen (see **Figure 2**).



Figure 2: Modems Properties screen

5. From the **Install New Modem** dialog box, check **Don't detect my modem; I will select it from a list**. Then click **Next>** (see **Figure 3**).

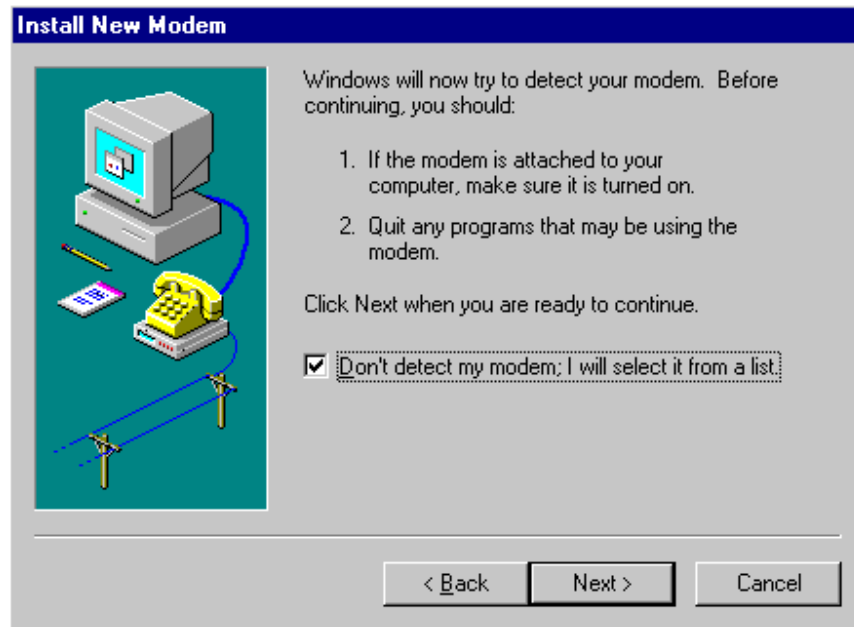


Figure 3: The Install New Modem box

6. Click on the **H**ave Disk...button (see **Figure 4**).

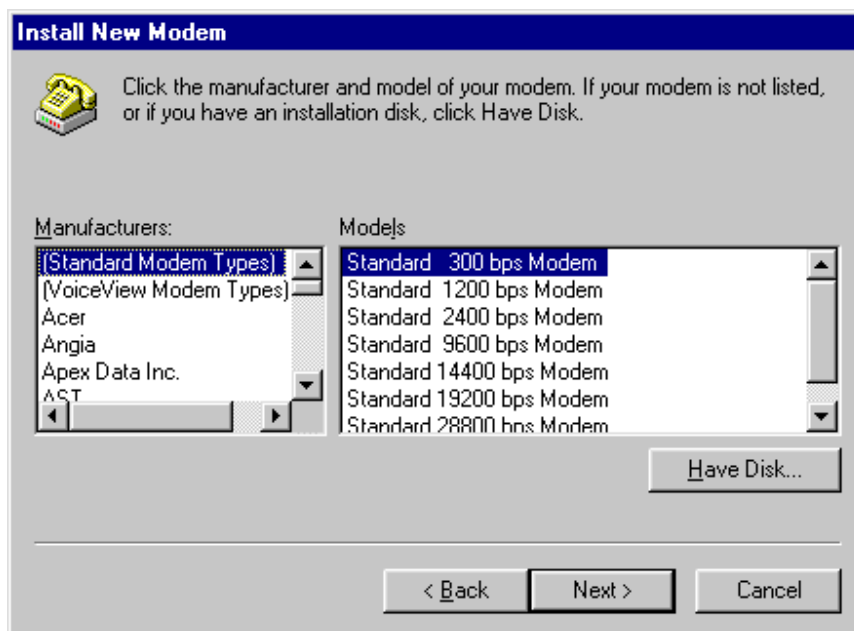


Figure 4: Click on the Have Disk... button

7. Windows will ask you for the location of the mdmadtn.inf file. Locate where you downloaded the file and click on **OK**.

8. The **Install New Modem** screen should show a screen similar to that in **Figure 5**. Click on **Next>**.

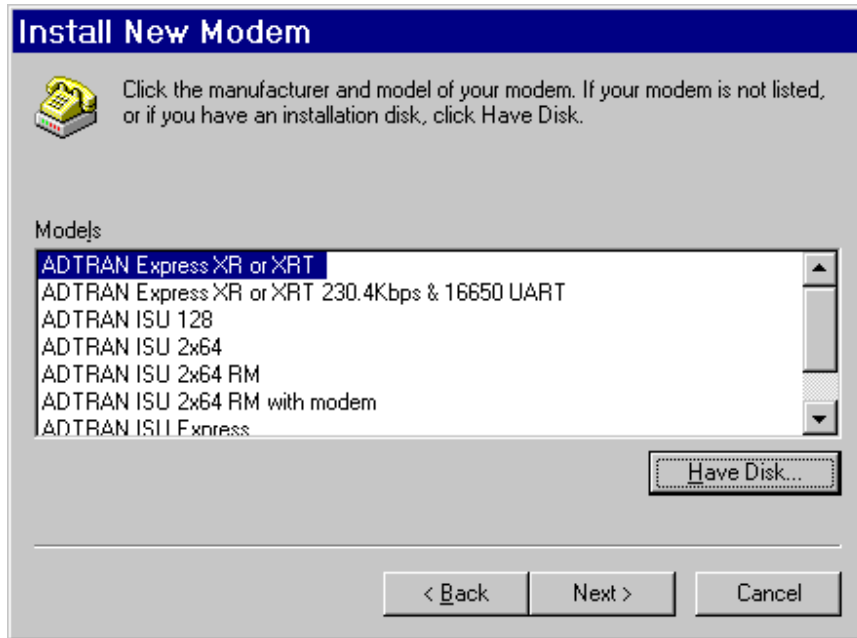


Figure 5: Install New Modem Screen

9. Select the COM Port that is connected to the Express (see **Figure 6**). Click on **Next>**.

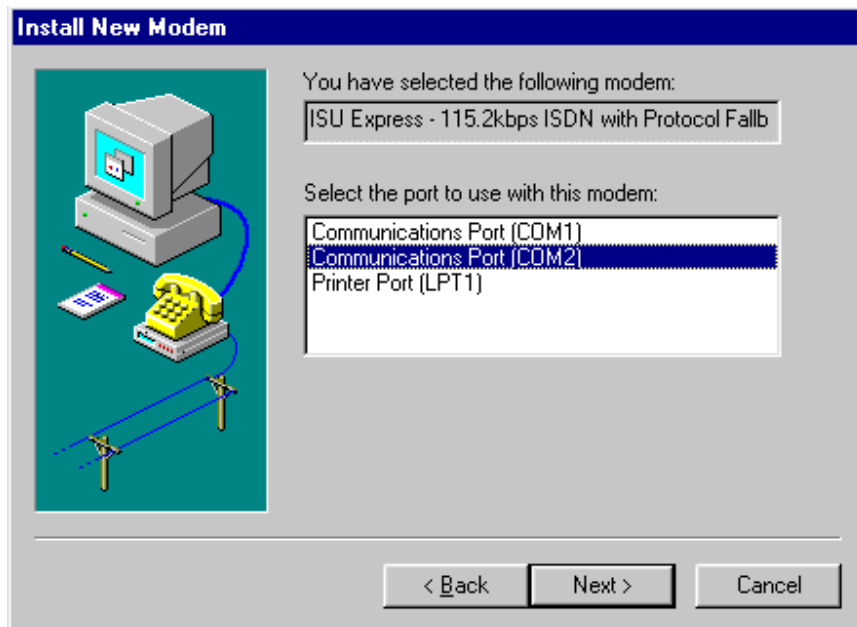


Figure 6 : Select Your COM Port

10. On the next screen read the text and click on **Finished** (see **Figure 7**).

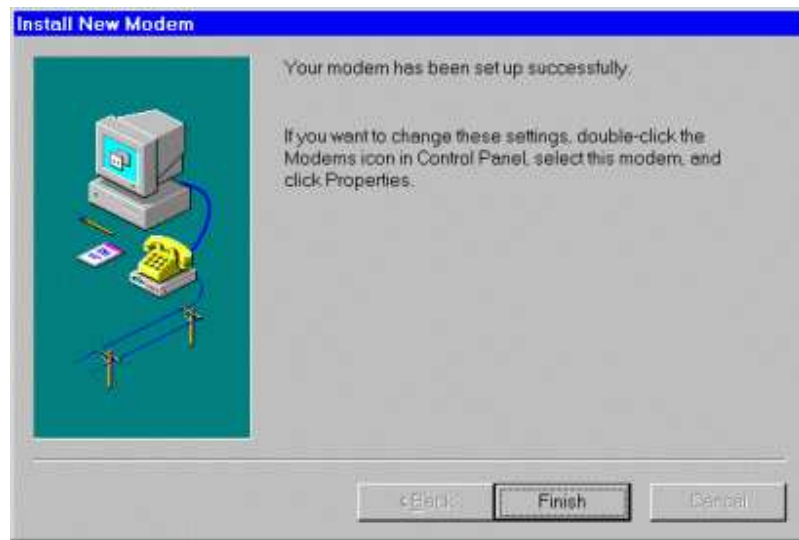


Figure 7 : Finished screen

The ADTRAN .inf file has now been installed into your operating system, and your ADTRAN ISDN product is now supported by your computer. If you experience any problems using your ADTRAN product, please contact ADTRAN Technical Support.

Windows and Microsoft are registered trademarks of Microsoft Corporation.