



Using ADTRAN ISDN Devices with EMED MultiView in Windows 95/98 Operating Systems

Introduction

This Technical Support Note explains how to install MultiView into a PC using ADTRAN ISDN units and the Windows 95/98 operating system.

Before You Begin

- This Technical Support Note assumes that you have already installed Windows 95 on your computer.
- This Technical Support Note assumes that MultiView has been installed. This document only covers information concerning MultiView setup with Windows 95/98 and ADTRAN ISDN devices.
- This Technical Support Note does not cover initial setup of ADTRAN ISDN devices. For instructions on initial setup refer to KB article # 1549.

Installing ADTRAN Adapters into MultiView

To install the ADTRAN adapters into MultiView, do the following:

1. If you have a ISU Express, ISU 2x64, or ISU 128 perform quick setup for either **Dial 57.6 Asyn** or **115.2 Asyn**, for the Express NTU, select **Remote 128k** before starting (see QUICK SETUP section of the manual). If you have an Express XR/XRT or Express 3000 you do not have to change any configuration after the initial setup.
2. At the main desktop screen right click on **My Computer** then select **Properties>Device Manager>** then double-click on **Ports**.
3. Double-click on the communications port you have the unit connected to and change the following under the Port Settings tab (see Figure 1):
 - a. Set **Bits per second** to 115200.
 - b. Set **Flow Control** to **Hardware**.
 - c. Click **OK** until you return to desktop screen.
 - d. Shutdown and restart.

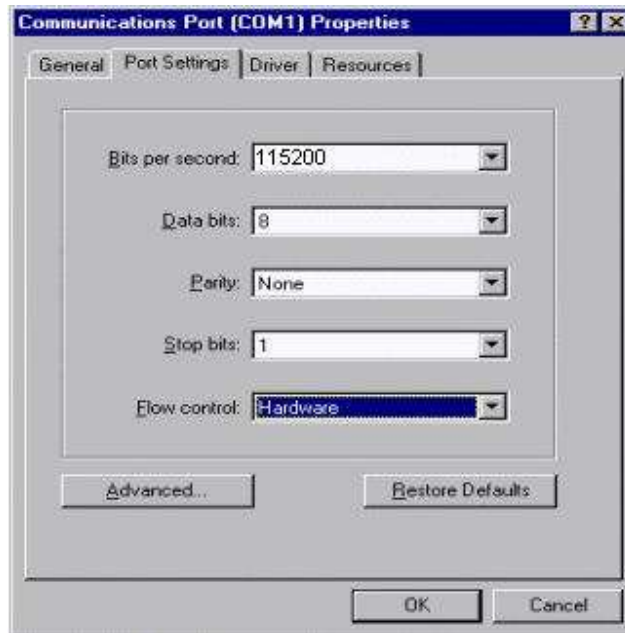


Figure 1

4. Click on **Start>Programs>EMED>MultiView**.
5. Go to **Communications>Configure....**
6. Under **Modem** select **ADTRAN ISU 128 ISDN** (Use for all units, see Figure 2)
7. Set your settings as follows:
 - a. Choose the correct **Port**.
 - b. Set **Speaker Volume** to Off.
 - c. Do not select **Disable Communications**.

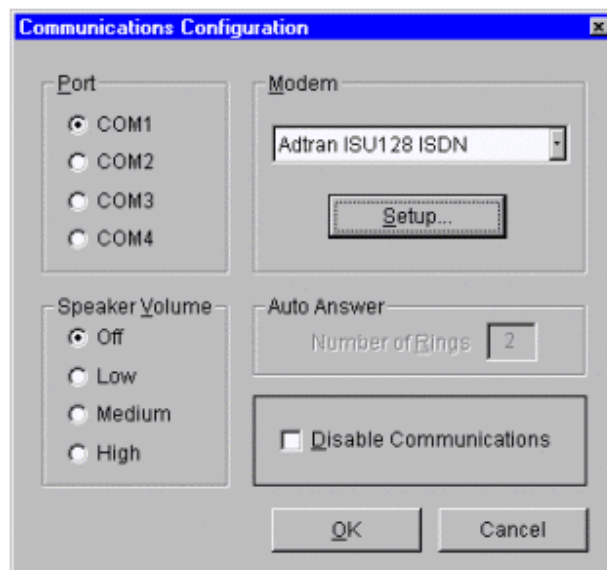


Figure 2

8. Select **Setup...**
9. Under the Modem Setup screen the following should be set (see Figure 3):
 - a. **Modes** should only have 1 ring selected.
 - b. **Speed** should be set to 115.2.
 - c. Under **Command strings** the following should be set:

Dial: ATD
Answer: ATA
Hang-up: ATH
Escape: +++
Reset: AT
Setup: AT&F8&C1&D2\Q3S53=3S0=0S54=11S15=0

Explanation of AT commands:

&F8 DTE Rate=115.2k Asynchronous
&C1 Carrier Detect Normal
&D2 DTR Idle When Off
\Q3 Hardware Flow Control
S53=3 64k Call Type
S0=0 Auto Answer Disabled (Allows Software to answer incoming calls)
S54=11 Fallback (S54=2 for Bonding or S54=6 for V.120)
S15=0 Negotiate ADTRAN Bonding Rev.0 1(Use only if supported by unit)

- d. **Note:** Do not select **Polling** or **Initialize** (see Figure 3).

Note: ADTRAN units with the following part numbers may not support the S15 register: 1200029L series, 1200051L series, and 1200081L series. If your unit has this part number do not add the S15=0 setting.

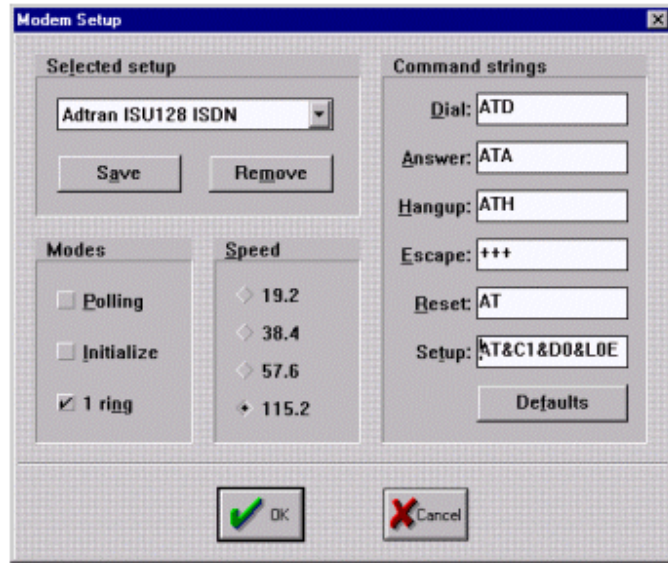


Figure 3