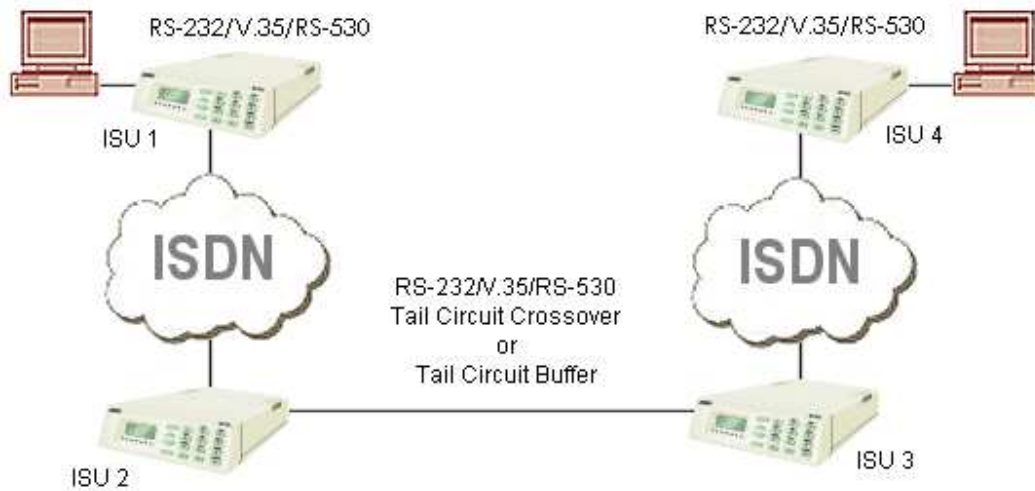




ADTRAN ISU Tail Circuit Application

Typical ISU Tail Circuit Application



Typical ISU Tail Circuit Application

Note: The ISU 512 cannot be used where tail circuit meets due to no ETC provision.

Tail Circuit Crossover Cables

| RS-530 Tail Circuit Crossover | |
|--------------------------------------|--------------|
| Pin 7 SGND | Pin 7 SGND |
| Pin 4 RS | Pin 8 CD |
| Pin 8 CD | Pin 4 RS |
| Pin 3 RD-A | Pin 2 SD-A |
| Pin 16 RD-B | Pin 14 SD-B |
| Pin 2 SD-A | Pin 3 RD-A |
| Pin 14 SD-B | Pin 16 RD-B |
| Pin 17 RC-A | Pin 24 ETC-A |
| Pin 9 RC-B | Pin 24 ETC-B |
| Pin 11 ETC-B | Pin 9 RC-B |

| V.35 Tail Circuit Crossover | |
|------------------------------------|-------------|
| Pin B SGND | Pin B SGND |
| Pin C RS | Pin F CD |
| Pin F CD | Pin C RS |
| Pin R RD-A | Pin P SD-A |
| Pin T RD-B | Pin S SD-B |
| Pin P SD-A | Pin R RD-A |
| Pin S SD-B | Pin T RD-B |
| Pin V RC-A | Pin U ETC-A |
| Pin X RC-B | Pin W ETC-B |
| Pin U ETC-A | Pin V RC-A |
| Pin W ETC-B | Pin X RC-B |

| RS-232 Tail Circuit Crossover | |
|--------------------------------------|------------|
| Pin 2 TD | Pin 3 RD |
| Pin 3 RD | Pin 2 TD |
| Pin 4 RS | Pin 8 CD |
| Pin 7 SGND | Pin 7 SGND |
| Pin 8 CD | Pin 4 RS |
| Pin 17 RC | Pin 24 ETC |
| Pin 24 ETC | Pin 17 RC |

Settings

| | ISU 1 | ISU 2 | ISU 3 | ISU 4 |
|--|--|-------|-------|--------|
| Call Type | The Call Type should be set to the provided circuit rate (i.e., 56k, 64k). | | | |
| DTE Rate | The DTE Rate and Data Format (i.e., Sync/Async) should match throughout). | | | |
| DTE Clock | Normal | Ext | Ext | Normal |
| Note: If a tail circuit buffer is used instead of a cross-over cable, set all DTE Clocks to Normal. | | | | |

If you experience any problems using your ADTRAN product, please contact ADTRAN Technical Support.
