



Adding Support for ADTRAN ISDN Products to Microsoft Windows® 2000 Operating System

Introduction

This Technical Support Note details adding support for ADTRAN ISDN products to Microsoft Windows 2000 for high-speed data communication. To use an ADTRAN product with Microsoft Windows 2000 requires the installation of the appropriate Modem Information File (.inf file.) This file defines the characteristics of the ADTRAN ISDN product providing Windows the information to initialize and use it.

Before You Begin

- If the PC COM port connected to the ADTRAN device does not have at least a 16550 UART chip, the performance of your application for baud rates of over 19.2 kbps will be adversely affected. For rates over 19.2 kbps, you need to purchase an add-on card with the 16550 UART chipset.
- If your terminal adapter is not set up to run MP or BONDING (it is only connecting on one bearer channel), or if your Internet provider allows access on only one bearer channel, then setting your serial port to a baud rate of 115.2 kbps may allow you to improve your throughput. In some cases, doing this will allow the full use of the 64 kbps bearer channel, instead of using a baud rate of only 57.6 kbps.
- In order to place calls at 230.4 kbps, you are required to have a 16650 UART on your COM port.
- If your ADTRAN ISDN product did not come with an installation disk or you do not have the installation disk with the .inf file, you can download the ADTRAN INF file from the ADTRAN web site.

Installing an ADTRAN ISDN device into Windows 2000

1. Shut down and power the computer off.
2. Connect the ADTRAN ISDN device to your computer. (See the User Manual for specific connection/configuration instructions.)
3. Power on the ADTRAN ISDN device, then power on the computer.

4. Windows 2000 will detect new hardware and install the device. If the `mdmadtn.inf` file is not in the `C:\WINNT\INF` folder, Windows will initiate the **Found New Hardware Wizard**, prompting you for its location.

Found New Hardware Wizard

1. Once Windows starts the **Found New Hardware Wizard**, select **Next >** to continue the installation procedure. (See Figure 1.)



Figure 1

2. Select **Search for a suitable driver for my device**; then select **Next >**. (See Figure 2.)



Figure 2

3. Windows will then prompt you for where to search for the mdmadtn.inf file. Check the location(s) that apply. If it is located on your hard drive, check **Specify a location**. Select **Next >**. (See Figure 3.)



Figure 3

4. If **Specify a location** was checked, you will need to **Browse** to the directory on your hard drive where the mdmadtn.inf file is located. Select OK. (See Figure 4.)



Figure 4

5. Windows will then display the driver that was found for the device. Select **Next >**. (See Figure 5.)



Figure 5

6. You will then see a warning that the driver has not been digitally signed. Select **Yes** to continue with the installation. (See Figure 6.)



Figure 6

7. The ADTRAN ISDN device will then be properly identified and displayed on the final screen. Select **Finish** to complete the installation. (See Figure 7.)



Figure 7

If Windows does not find new hardware

1. Go to **Control Panel**. The **Control Panel** may be found in **My Computer**, or click on the **START** button with the left mouse button and hold it while moving the pointer to **S**ettings and then over to **C**ontrol Panel. Then release the button.
2. Double-click on the **Phone and Modem Options** icon in **Control Panel**. (See Figure 8.)



Figure 8

3. Go to the **Modems** tab and select **Add...** (See Figure 9.)

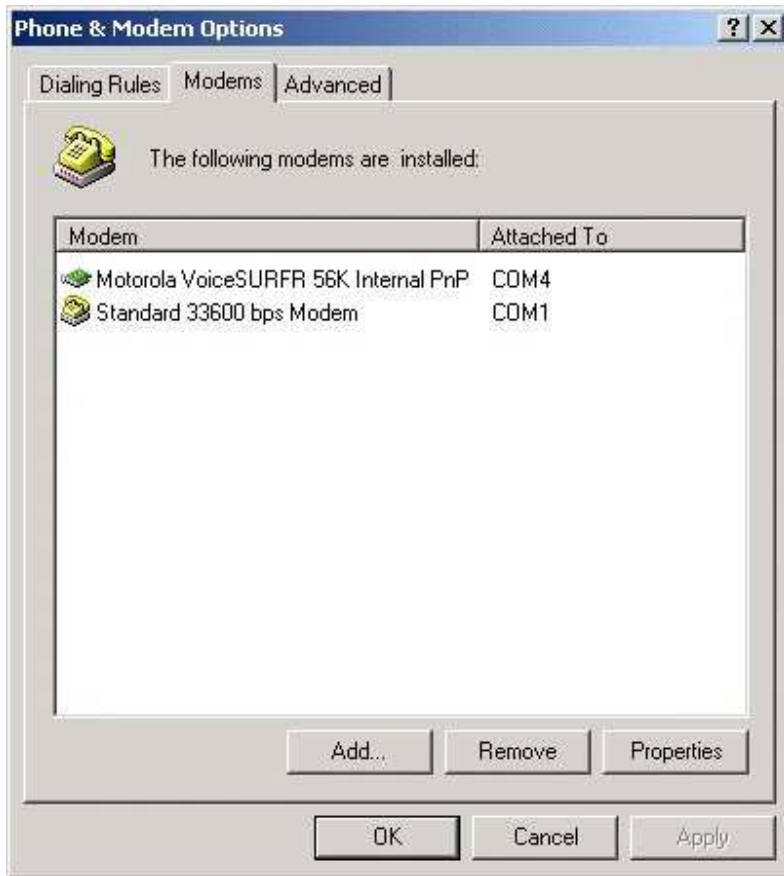


Figure 9

4. From the **Install New Modem** dialog box, check **Don't detect my modem; I will select it from a list.**; then click **Next >** . (See Figure 10.)



Figure 10

5. Select your ADTRAN ISDN product from the list. (See Figure 11.)

If your ADTRAN ISDN product is not listed:

- o Click the **H**ave Disk... button.
- o Windows will prompt you for the location of the mdmadtn.inf file.
Browse to locate the mdmadtn.inf file; then click **O**K.
- o Select your ADTRAN ISDN product from this list; then click **N**ext > .

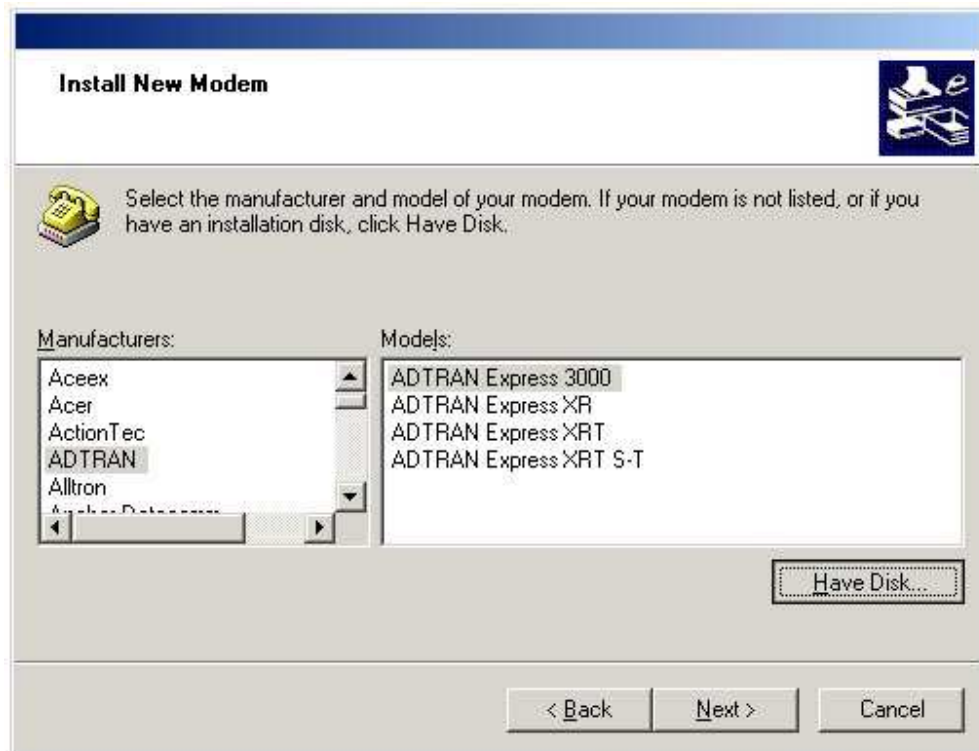


Figure 11

6. Select the COM Port that is connected to the ADTRAN ISDN device. (See Figure 12.) Click **Next >**.

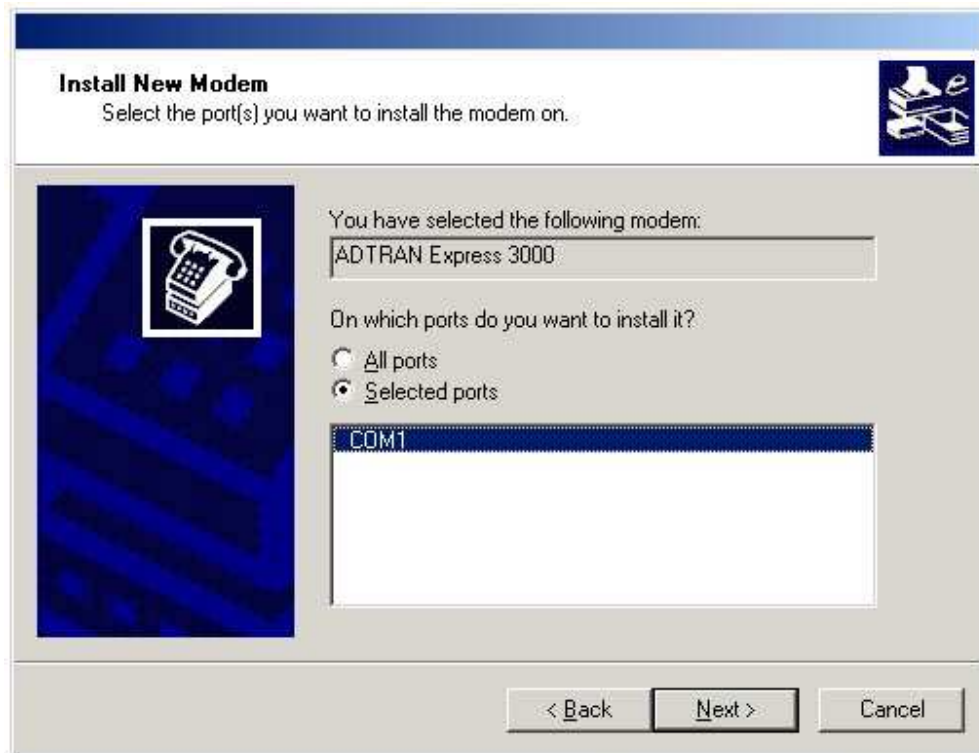


Figure 12

7. The next screen will ask you if it's safe to install the driver. Click **Y**es. (See Figure 13.)



Figure 13

8. On the next screen read the text; then click **Finish**. (See Figure 14.)



Figure 14

The ADTRAN .inf file has now been installed into your operating system, and your ADTRAN ISDN product is now supported by your computer. For more information on configuring Windows 2000 for use with ADTRAN ISDN products, see the ADTRAN Technical Support Note Configuring Microsoft Windows 2000 Networking and Dial-Up Connections for use with ADTRAN ISDN Products (Knowledgebase Article # 2765). If you experience any problems using your ADTRAN product, please contact ADTRAN Technical Support.

Windows and Microsoft are registered trademarks of Microsoft Corporation.