

HSU 100

HDSL SERVICE UNIT



T1 DSU/CSU with HDSL network interface for campus applications

Can operate to distances of 9 Kft (26awg) or 12 Kft (24awg)

Provides a base V.35 and EIA 530 DTE interface

Slot accepts option modules providing flexibility or path for growth

Ability to store two DSO maps and switch configurations at predetermined times

Full flexibility with bandwidth allocations

Extensive user-invoked tests

Easy-to-follow front panel menu structure or optional T-Watch software provides access to all network information

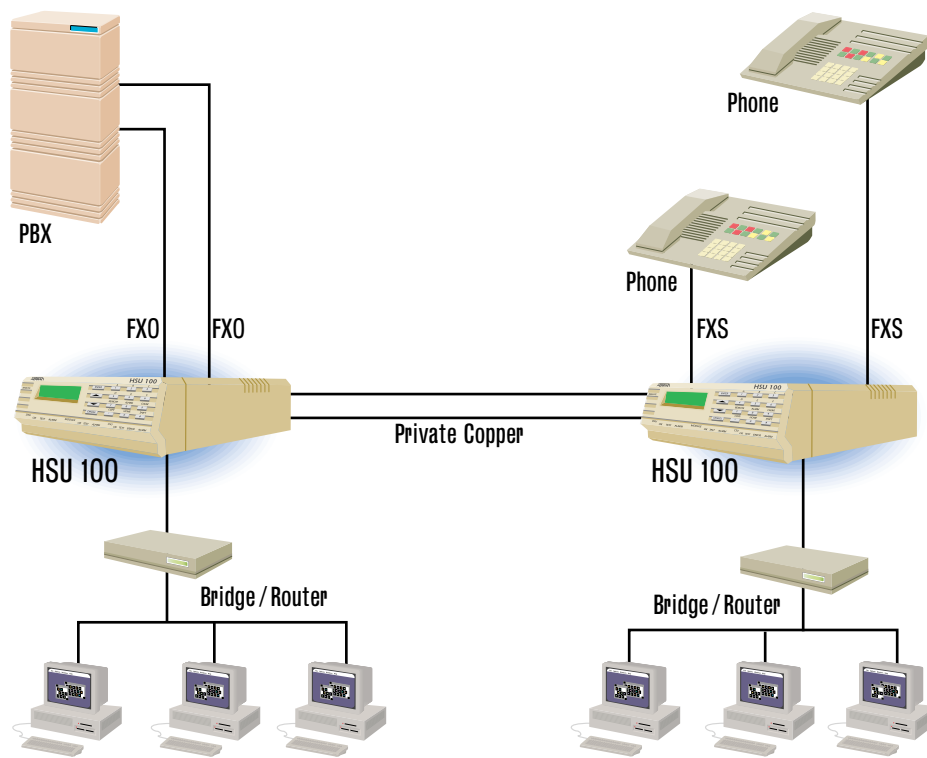
Standard 5 year warranty

The ADTRAN HSU 100 (HDSL Service Unit) is an intelligent T1-FT1 DSU/CSU with an HDSL network interface. HDSL technology has been developed as an alternative repeaterless technology for delivery of T1 services from the telcos. This same technology has applications in private "campus" networks. The HSU 100 with its HDSL front end is designed to interface a variety of customer data terminal equipment (DTE) to private or leased copper facilities. With the HSU 100 on each end it is possible to have T1 digital connectivity over two pairs of unconditioned copper to a distance of up to 9,000 feet over 26awg or 12,000 feet over 24awg. The HSU utilizes D4 SF or ESF framing formats with AMI or B8ZS coding. When in ESF framing mode the unit satisfies both ANSI T1.403 and AT&T 54016 modes for utilization of the facility data link (FDL).

The HSU 100 provides an integral Nx56/64 port. The port can operate as either a CCITT V.35 or as an EIA 530 DTE interface. The user selects one interface, which can be configured to operate synchronously at Nx56 or Nx64 data rates where n = 1 to 24. The channels used can be selected at random. An expansion slot is located on the rear of the unit which accepts a single expansion module. A number of application-specific modules are available. The modules are the same set available for the TSU 100/600 T1 DSU/CSUs. The modules can be combined in a variety of ways yielding a truly versatile low cost solution for campus interconnection. Modules include: Single V.35, DSX-1 (PBX), Drop and Insert, Single/Dual OCU DP, and Dual or Quad Voice.

The HSU 100 is configured using a friendly menu structure which allows for optioning, monitoring, and testing of the HSU. An optional software package, called T-Watch is available to interface to a rear-mounted, control port.

Several tests are built-in to allow the user to diagnose the circuit. Several local and remote network loopbacks can be invoked. The user can also select test patterns, including: 511, QRSS and 3 in 24.



SPECIFICATIONS

DTE INTERFACE

BIT RATE
Nx56 or Nx64 kbps
(N=1 TO 24)

ELECTRICAL
CCITT V.35
EIA RS-530

MECHANICAL
V.35: Winchester-type 34 PIN
530: DB-25

TEST

LOCAL
Payload/Line

REMOTE
Payload/Line

PATTERN
511 (Selectable DS0s)
QRSS (Selectable DS0s)

PERFORMANCE MONITOR

ERROR COUNTS
ES, SES, UAS, %AS, %EFSEC, Alarms, Error Rates

REPORTS
NI information stored for last 24 hours
in 15-minute increments

NETWORK INTERFACE

HDSL

LINE RATE
T1(1.544 Mbps)

PHYSICAL
RJ-48C

FRAMING
D4/ESF

CODING
AMI/B8ZS

ESF

AT&T 54016 and ANSI T1.403

DSO ASSIGNMENT
User Selectable

T1 TRANSMIT TIMING
Loop Timed, Internal, DTE (base Nx),
by DSX-1 module (if installed)

PHYSICAL

SIZE
3.125" H, 12" D, 8.5" W

WEIGHT
5 lbs

POWER
115 VAC, 60 Hz, 9 W

ENVIRONMENT

OPERATING
0°C to 45°C (32°F to 122°F)

STORAGE
-20°C to 70°C (-4°F to 158°F)

HUMIDITY
Up to 95% non-condensing

ADTRAN

CORPORATE OFFICE

901 Explorer Boulevard
Huntsville, Alabama 35806-2807
(800) 827-0807
Fax (205) 971-8699

SALES OFFICES

Pasadena, CA
(800) 788-5408

Denver, CO
(303) 220-4777

Atlanta, GA
(404) 806-9788

Chicago, IL
(708) 851-6699

Kansas City, MO
(816) 373-6700

New York, NY
(203) 261-3554

Philadelphia, PA
(610) 559-6000

Dallas, TX
(214) 869-7699

Washington D.C.
(703) 777-3037

Canada
(416) 805-9937

ORDERING INFORMATION

Equipment	Part Number
HSU100	1200097L1



ADTRAN is an ISO 9001
registered company.

61200.097L1-8A
January 1995

Specs subject to change without notice.
Printed in USA.



Printed on recycled paper.

©1995 ADTRAN, Inc.