



Connecting to a TSU Metal, TSU LT, TSU ESP, or TSU Multiport Unit using T-Watch Pro

Introduction

This Technical Support Note will guide you through connecting to a TSU Metal, TSU LT, TSU ESP, or TSU Multiport Unit via the T-Watch Pro configuration management software.

Before You Begin

There are two methods of connecting to a unit via T-Watch: **Direct** and **LAN**. LAN access requires that the unit be connected to your local network and its IP information configured. If you intend to use Direct access, ensure that you have the correct cable and adapter connecting your PC's COM port to the chain in/craft/control port of the TSU Product. For more information, see kb article # 1530 .

Configuring the TSU Product Unit ID and Passcode

In order for T-Watch Pro to connect to a TSU product, the unit's **Unit ID** and **Passcode** must both be set. These can be accessed via the keypad on the front or a VT-100 terminal session.

From the front panel keypad:

TSU, TSU LT, TSU ESP Configuration

1. Select **3)UTIL** and press **Enter**.
2. Select **4)ADDRESS** and press **Enter**.
3. Enter the desired **Address** (up to 4 digits) for this unit (2 is the default **Address** on most units) and press **Enter**.
4. Select **5) SET PASSCODE** and press **Enter**.
5. Enter the desired **Passcode** (up to 4 digits) for this unit (0022 is the default **Passcode** on most units) and press **Enter**.

Note: For LAN access to units with a 10BaseT Ethernet Port, you must enter the **IP ADDRESS**, **SUBNET MASK**, and **DEFAULT GATEWAY/ROUTER** under the **3)UTIL** menu.

TSU XX0/XX0e Configuration

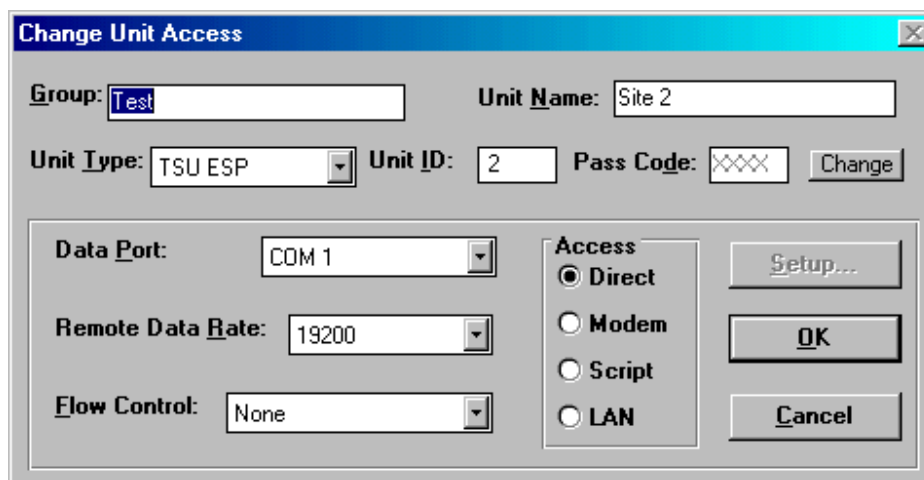
From the front panel keypad:

1. Select **3)UTIL** on the keypad and press **Enter**.
2. Select **4)UNIT ID** and press **Enter**.
3. Enter the desired **Unit ID** (up to 4 digits) for this unit (2 is the default **Unit ID** on most units) and press **Enter**.
4. Select **3) SET PASSCODE** and press **Enter**.
5. Enter the desired **Passcode** (up to 4 digits) for this unit (0022 is the default **Passcode** on most units) and press **Enter**.

Note: For LAN access to units with a 10BaseT Ethernet Port, you must enter the **IP ADDRESS, SUBNET MASK, and DEFAULT GATEWAY/ROUTER** under the **3)UTIL** menu.

T-Watch Pro Configuration for Direct and LAN Access

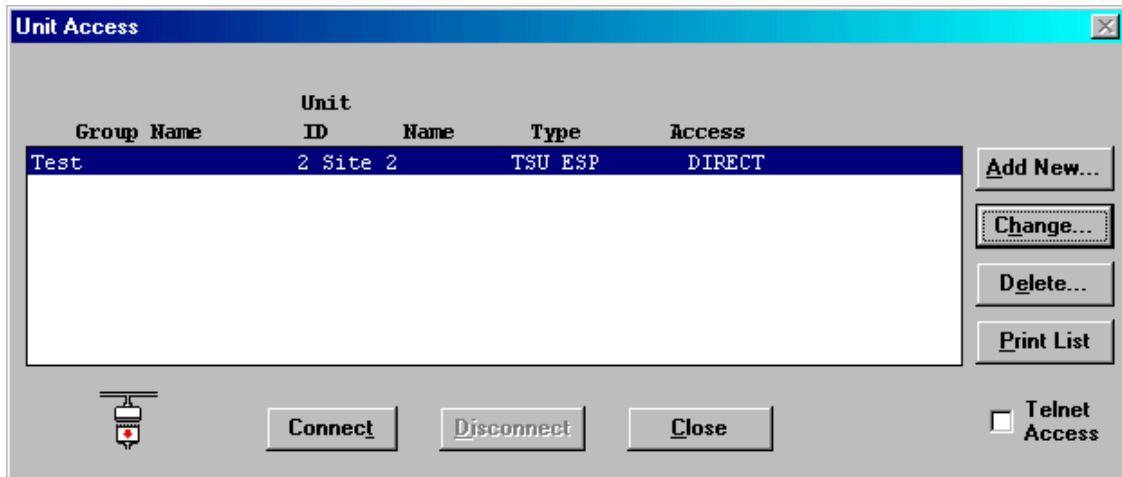
1. Run the T-Watch Pro software
2. Select **File** from the menu bar and then **Unit Access** to open the **Unit Access Table**.
3. Click **Add New** and the following screen will appear:



4. Select the **Unit Type** from the drop-down menu.
5. Enter the **Unit ID** and **Pass Code** (the default passcode, 0022, is already entered).
6. **For LAN access:**
 - a. Under **Access**, select **LAN**, then click **Setup...**
 - b. Enter the **Network IP Address** of the TSU and click **OK**.

For Direct access:

- c. Select the communications port that you will be using from the **Data Port** drop-down menu.
- d. Select the baud rate that you will be using from the **Remote Data Rate** drop-down menu.
- e. Select **None** from the **Flow Control** drop-down menu.



7. Select the unit you wish to connect to and click **Connect**.

Note: If the unit is connected to your network and you wish to use Telnet to access it, the **Telnet Access** box must be selected.