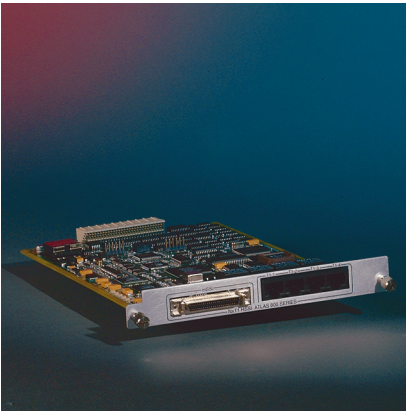


T1 Inverse Multiplexing



ATLAS 800 Series NxT1 HSSI/V.35 Module

Product Features

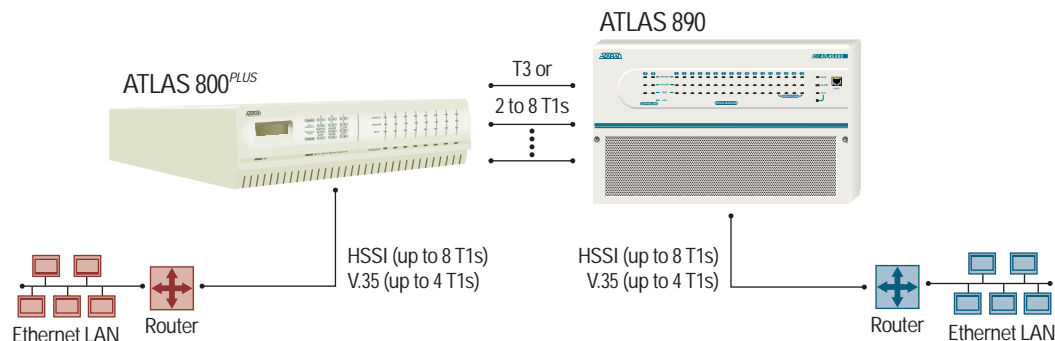
- Inverse multiplexes two to eight T1s
- Module includes four T1 ports and a single HSSI port
- V.35 interface supported with an adapter cable
- Supports point-to-point applications only
- Automatic bandwidth adjustment/recovery
- Compatible with the ATLAS 550 NxT1 HSSI/V.35 module
- Occupies one ATLAS Module slot
- Module does not impact other ATLAS applications
- Standard five-year warranty

The NxT1 HSSI/V.35 Module combines multiple T1 circuits into a single logical data stream to an integral High-Speed Serial Interface (HSSI) port or V.35 port using an optional cable. This hot-swappable module uses an ADTRAN proprietary T1 Inverser Multiplexing protocol to support point-to-point, high-speed data applications.

The inverse multiplexing capacity of the module accommodates eight T1s, and the module automatically adjusts the data rate to the HSSI/V.35 port upon loss of one or more T1 circuits. In addition to the HSSI port, four T1 ports are included on the module itself, while additional T1 ports can be provided using other ATLAS 800 Series T1 modules or a T3 circuit. Dial backup is not available for any bandwidth assigned to the HSSI/V.35 port.

Use of the NxT1 HSSI/V.35 module in the ATLAS Integrated Access Device (IAD) does not impact other applications such as T1, ISDN, and/or Frame Relay.

The primary application for this module is high-speed connectivity between two external routers, each configured with a HSSI or V.35 port.





ADTRAN, Inc.
 Attn: Enterprise Networks
 901 Explorer Boulevard
 Huntsville, AL 35806

P.O. Box 140000
 Huntsville, AL 35814-4000

256 963-8000 voice
 256 963-8699 fax
 256 963-8200 fax back

General Information
 800 9ADTRAN
 info@adtran.com
 www.adtran.com

**Pre-Sales
 Technical Support**
 800 615-1176 toll-free
 application.engineer@adtran.com
 www.adtran.com/support

Where to Buy
 877 280-8416 toll-free
 channel.sales@adtran.com
 www.adtran.com/where2buy

**Post-Sales
 Technical Support**
 888 423-8726
 support@adtran.com
 www.adtran.com/support

**ACES Installation &
 Maintenance Service**
 888 874-ACES
 aces@adtran.com
 www.adtran.com/support

International Inquiries
 256 963 8000 voice
 256 963-6300 fax
 international@adtran.com
 www.adtran.com/international

**For the regional office
 nearest you, visit:**
 www.adtran.com/where2buy



I.S. EN ISO 9001
 ADTRAN is a
 ISO 9001 registered company.



TL 9000
 ADTRAN is a
 TL 9000 registered company.

Printed in the U.S.A.
 61200771L1-8A January 2002
 ©2002 ADTRAN, Inc. All rights reserved.

T1 Inverse Multiplexing

ATLAS 800 Series NxT1 HSSI/V.35 Module

Product Specifications

PHYSICAL INTERFACE

- One 50-pin female HSSI port
- Four 8-pin modular RJ-48C

T1 FRAMING

- D4, ESF

T1 LINE CODING

- AMI, B8ZS

LINE LENGTH

- 24 gauge: 6,000 feet (DS-1), 655 feet (DSX-1)

DIAGNOSTICS

- Local loopback-line and payload
- Remote loopback-line and payload

LINE BUILD OUT

- 0, 7.5, 15, 22.5 dB
- 266, 399, 533, 655 feet

ALARMS

- Loss of signal, red, yellow, blue

ENVIRONMENT

- Operating Temperature: 0° to 50° C (32° to 122° F)
- Storage Temperature: -40° to 70° C (-40° to 158° F)
- Relative Humidity: Up to 95%, non-condensing

PHYSICAL

- Size: 1.625" H, 6.25" W, 9.0" D

AGENCY APPROVALS

- FCC Part 15, Class A, UL, and Canadian UL (CUL)

POWER

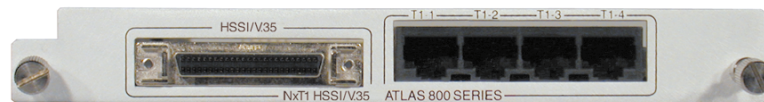
- 7 W

PRODUCT INCLUDES

- (4) RJ-48 to RJ-48 cables (6 ft)
- Quick Start Guide

Ordering Information

Equipment	Part #
NxT1 HSSI/V.35 Module	1200771L1
ATLAS NxT1 V.35 Adapter Cable	1200763L1



Specifications subject to change without notice.
 ADTRAN is a registered trademark of ADTRAN, Inc.