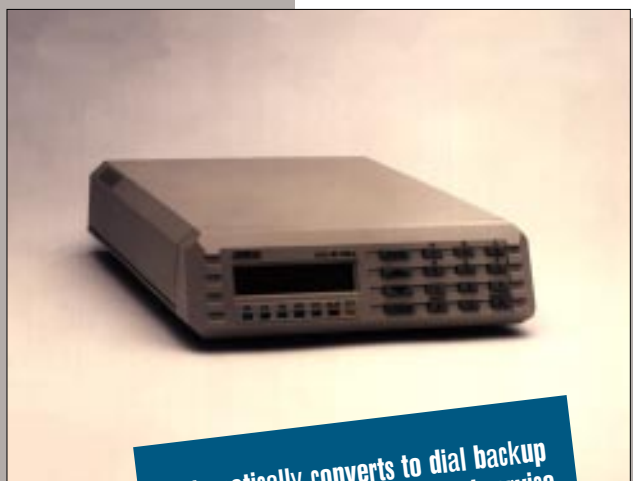


DSU III DBUc

DEDICATED DSU/CSU WITH DIAL BACKUP
AND SYNCHRONOUS DATA COMPRESSION



Automatically converts to dial backup mode upon failure of dedicated service.

Four backup options available:
4-wire SW56, 2-wire SW56,
V.32 bis and 1B+D ISDN.

Synchronous data compression on
bit formatted synchronous data.

Both EIA-232 and V.35 DTE interfaces

DTE-to-service rate matching - allows
slower DTE devices to communicate
over higher rate service offerings

Manual and automatic backup
and restoration options

Extensive diagnostic features

2x16 LCD display and
full numeric keypad

Standard 5 year warranty

The ADTRAN DSU III DBUc, is a high-performance Data / Channel Service Unit (DSU / CSU) that provides an interface between the Digital Data Service (DDS) and the customer's data terminal equipment while providing automatic dial backup of the dedicated circuit. In addition to four choices of backup options, the DSU III DBUc provides compression on bit formatted synchronous data.

The DSU III DBUc can reduce response times, speed file transfers, and increase throughput without increasing telco costs by compressing user data across the WAN connection. The compression algorithm is based on the TIA/EIA 655 recommendation for synchronous data compression over point-to-point digital circuits.

Four switched network backup options are available for automatic or manual backup of the DDS circuit: 4-wire Switched 56, 2-wire Switched 56, V.32 bis, and 1B+D ISDN. When the DSU III DBUc is configured for DDS service with dial backup, the user may select options to qualify a dedicated line failure. Upon line failure recognition, the DSU initiates connection to the remote unit over the switched network. If synchronous data compression is enabled, data will continue to be compressed over the backup circuit. Once the DDS circuit is restored, the unit can automatically or manually revert to the DDS circuit.

The DSU III DBUc supports synchronous operation at rates of 2.4, 4.8, 9.6, 19.2, 38.4, 56, 64, 128, 256, and 512 kbps and asynchronous data rates of 2.4 to 19.2, 38.4 and 57.6 kbps. The DTE interface can be selected as either EIA-232 or V.35. For applications utilizing synchronous data compression the V.35 DTE interface is required.

To aid in installation and network troubleshooting, the DSU III DBUc is equipped with a 2x16 line LCD and full numeric keypad and supports an extensive set of diagnostics including V.54 remote loopback, with 2047 and 511 BERT test patterns and DDS stress patterns 1-4, automatic service rate detection, and pair reversal detection.



CORPORATE OFFICE

901 Explorer Boulevard
Huntsville, Alabama 35806
(800) 827-0807
Local (205) 971-8000
Fax (205) 971-8699

SALES OFFICES

Pasadena, CA
(800) 788-5408
Local (818) 577-5400

Denver, CO
(303) 220-4777

Atlanta, GA
(800) 332-6945
Local (404) 806-9788

Chicago, IL
(708) 851-6699

Kansas City, MO
(913) 663-3939

St. Louis, MO
(314) 256-4433

New York, NY
(203) 261-3554

Philadelphia, PA
(610) 559-6000

Dallas, TX
(214) 869-7699

Washington D.C.
(703) 777-3037

Canada
(416) 805-9937

ORDERING INFORMATION

Equipment	Part Number
DSU III DBUc/S4 W	1200125L1
DSU III DBUc/V.32 bis	1200125L2
DSU III DBUc/S2 W	1200125L3
DSU III DBUc/ISDN	1200125L4



LS/ISO 9001/EN 29001

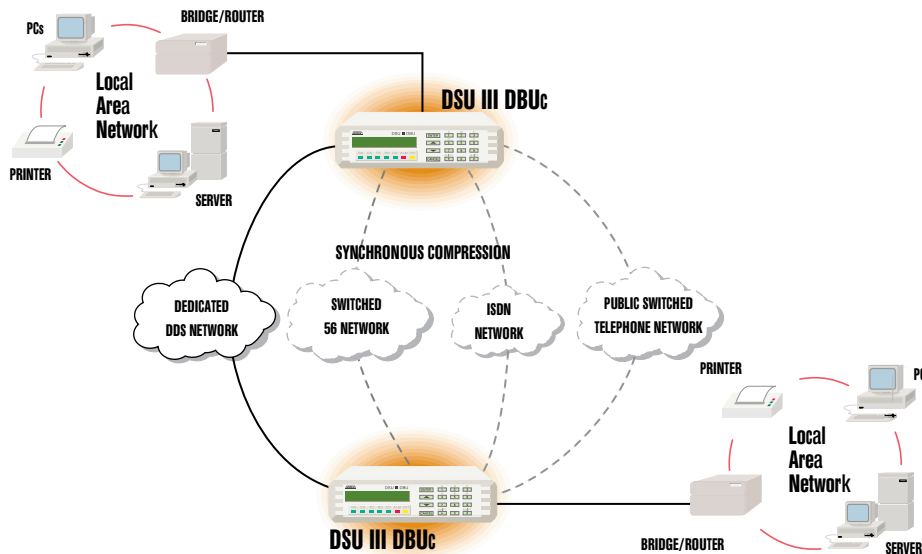
ADTRAN is an ISO 9001
registered company.

61200.125L1-8B
May 1995

Specs subject to change without notice
Printed in U.S.A.



Printed on recycled paper
©ADTRAN, Inc. 1995



SPECIFICATIONS

OPERATING MODES

Dedicated DDS
Dedicated DDS with automatic dial backup

DIAL BACKUP
Automatic or manual
4-wire SW 56
2-wire SW 56
V.32 bis/V.42 bis
ISDN (1B+D)

DTE RATES PROVIDED

DTE rates match service rates

DTE-to-service rate matching in both
dedicated and switched backup modes

SYNCHRONOUS RATES
2.4, 4.8, 9.6, 19.2, 38.4, 56, 64, 128,
256, and 512 kbps

ASYNCHRONOUS RATES
2.4, 4.8, 9.6, 19.2, 38.4, and 57.6 kbps

DTE INTERFACES PROVIDED

Both EIA-232 and V.35 electrical
and physical DTE interfaces
V.35 must be used for synchronous
compression

LINE REQUIREMENTS

LOOP TRANSMISSION PARAMETERS
As defined in:
AT&T PUB 62310: Dedicated DDS
AT&T PUB 41468: Switched 56
SPRINT TS 0046: Switched 56
Receiver sensitivity -45 dB at all rates

LINE INTERFACE
RJ-48S, 4-wire, full duplex

LOOP RATES
2.4, 4.8, 9.6, 19.2, 38.4, 56,
and 64 kbps

ENVIRONMENT

OPERATING
0°C to 50°C (32°F to 122°F)

STORAGE
-20°C to 70°C (-4°F to 158°F)

RELATIVE HUMIDITY
Up to 95%, non-condensing

FCC APPROVAL

FCC Part 15, Class A and Part 68

PHYSICAL

SIZE
2.25" H, 8.75" W, 10.25" D

WEIGHT
3 lbs

POWER
115 VAC, 60 Hz, 8 W

DIAGNOSTICS

NETWORK
CSU and DSU loopbacks

USER
Local DTE and loop, remote V.54

TEST PATTERNS
2047, 511, DDS, stress patterns 1-4