



*While navigating the Web Graphical User Interface (GUI) you will notice question mark symbols that indicate additional information is available. Simply place your cursor over the symbol to view the additional information.*

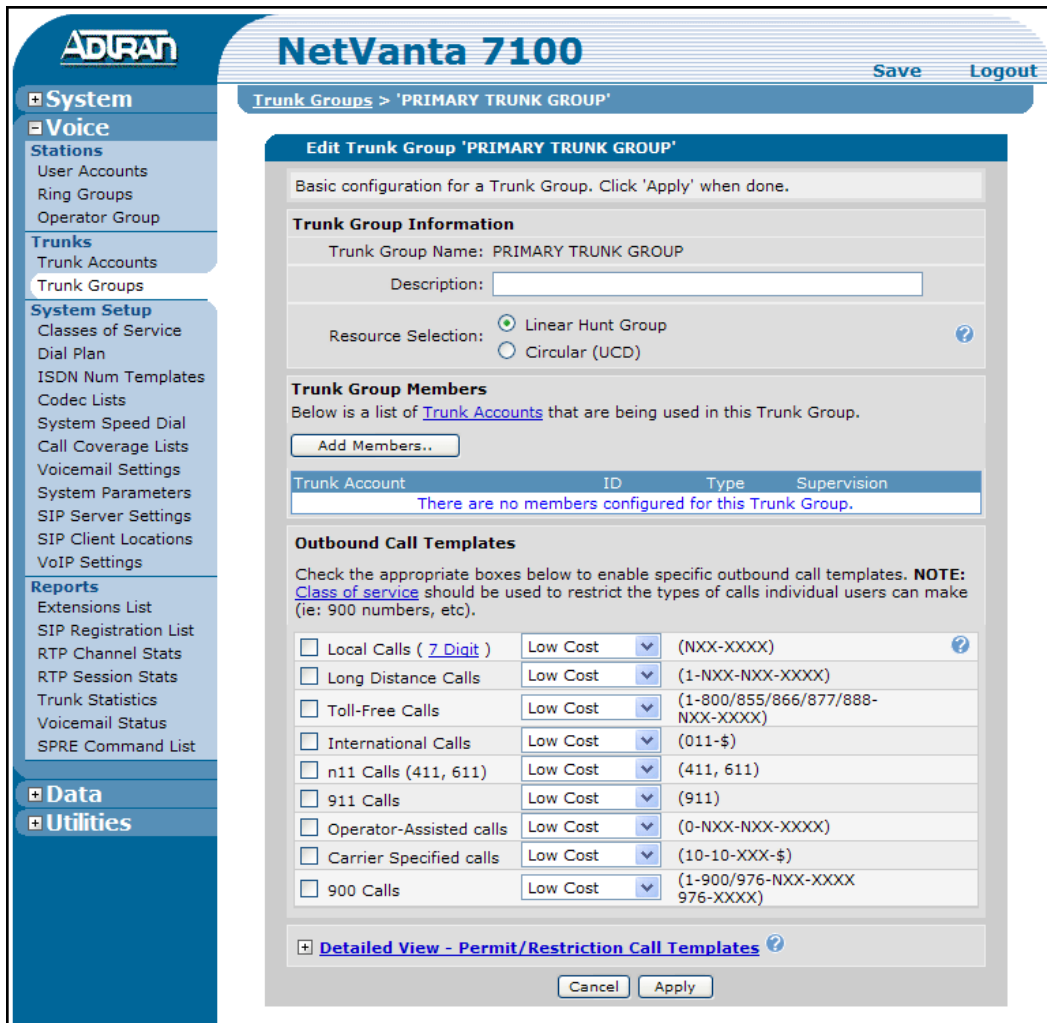
## Trunk Groups

Trunk Groups determine the resources used for outbound calls and the types of outbound calls permitted.

1. Open a web GUI session. For assistance, refer to the *NetVanta 7000 Series Web GUI Quick Configuration Guide* (document number 61200796L1-42.1).
2. Select **Voice > Trunk Groups** on the main GUI screen to display the screen below. Enter a name for the new Trunk Group and select **Add**.



- In the next screen, select the **Add Members** button to add Trunk Accounts to be used in this group.



- Select the types of calls to be "permitted" outbound on this trunk group. If a desired type of call is not shown, you may use the **Advanced Templates** setup located under the **Detailed View** (at the bottom of the screen) to enter your template. If the **Local Calls** item does not show 7 or 10 digits, please proceed to the **Dial Plan** to select the Local Dialing type.
- The configuration must be saved to non-volatile memory to retain changes after a power cycle or reboot. Select **Save** at the top right of the current screen and the screen below will appear. Select **OK** to close the window and return to the previous screen.

