

# Configuring the Total Access 900 Series

Web-Based GUI, AOS CLI,  
and Connecting to the Unit



Quick Configuration Guide

61210916L1-42.1B

March 2006



*The configuration parameters used in the example outlined in this document are for instructional purposes only. Please replace all example entries with your specific parameters to configure your application.*

## Using the Web-Based GUI

### Web-Based GUI

The Web-based GUI is an online configuration tool that allows you to easily configure and view the main settings, as well as the status of your system.

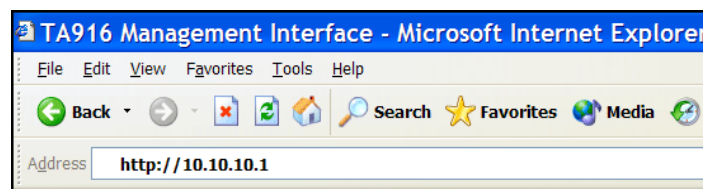
1. Connect the Total Access 900 Series unit to your network using the **ETH 0/1** port on the rear panel of the unit. The Total Access 900 Series units support auto MDI-MDIX crossover; therefore, a straight-through cable can be used for this connection.
2. Configure your PC to obtain an IP address automatically (DCHP), or change the IP address of your PC to **10.10.10.2**. The default address for the Total Access 900 Series unit is **10.10.10.1**.



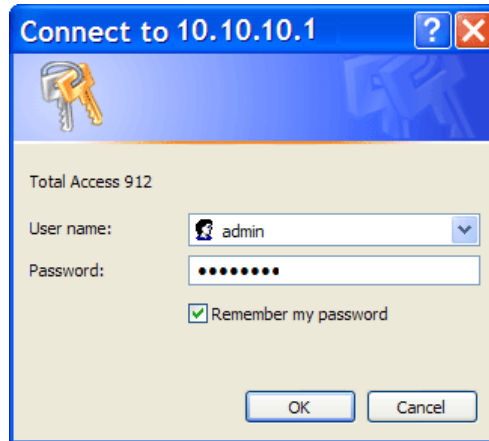
*Contact your network administrator if you need assistance changing your computer's IP settings.*

*If you cannot change the PC's IP address, you will need to change the Total Access 900 Series IP address. For this procedure, see **Connecting to the Total Access 900 Series** on page 4.*

3. Enter the IP address **10.10.10.1** (default) in your Internet browser **Address** field (see example, below).

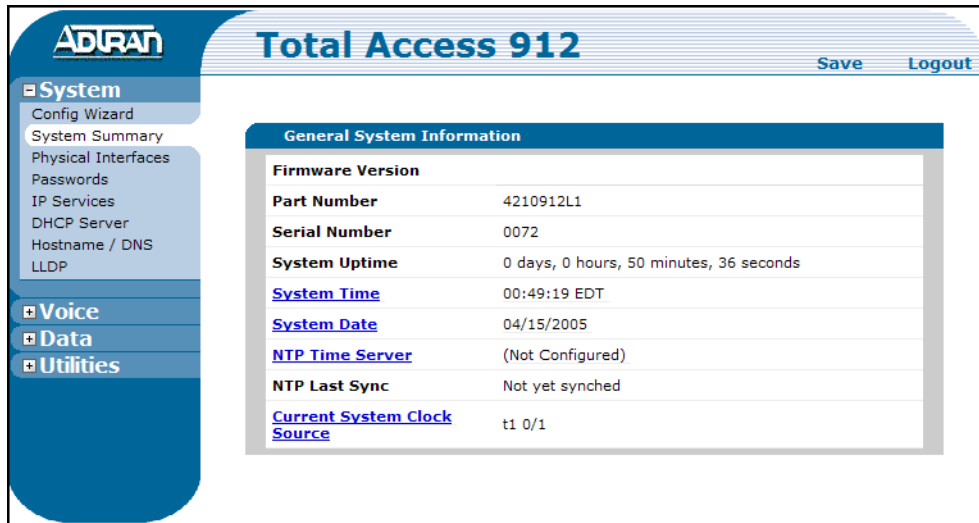


- Once you are connected, you will be prompted to enter the user name and password. Enter your **User name** (default is *admin*) and **Password** (default is *password*) and click **OK**.



A dialog box titled "Connect to 10.10.10.1" with a question mark icon and a close button. It features a key icon and the text "Total Access 912". Below this, there are input fields for "User name:" (containing "admin") and "Password:" (masked with dots). A checkbox labeled "Remember my password" is checked. At the bottom are "OK" and "Cancel" buttons.


- The initial GUI screen appears.



The initial GUI screen for ADTRAN Total Access 912. It features a blue header with the ADTRAN logo and the title "Total Access 912". On the right of the header are "Save" and "Logout" buttons. A left sidebar contains a menu with categories: System (Config Wizard, System Summary, Physical Interfaces, Passwords, IP Services, DHCP Server, Hostname / DNS, LLDP), Voice, Data, and Utilities. The main content area displays "General System Information" in a table:

General System Information	
<b>Firmware Version</b>	
<b>Part Number</b>	4210912L1
<b>Serial Number</b>	0072
<b>System Uptime</b>	0 days, 0 hours, 50 minutes, 36 seconds
<a href="#">System Time</a>	00:49:19 EDT
<a href="#">System Date</a>	04/15/2005
<a href="#">NTP Time Server</a>	(Not Configured)
<b>NTP Last Sync</b>	Not yet synched
<a href="#">Current System Clock Source</a>	t1 0/1



*While navigating the Web GUI, you will notice question mark  symbols that indicate additional information is available. Simply place your cursor over the symbol to view the additional information.*

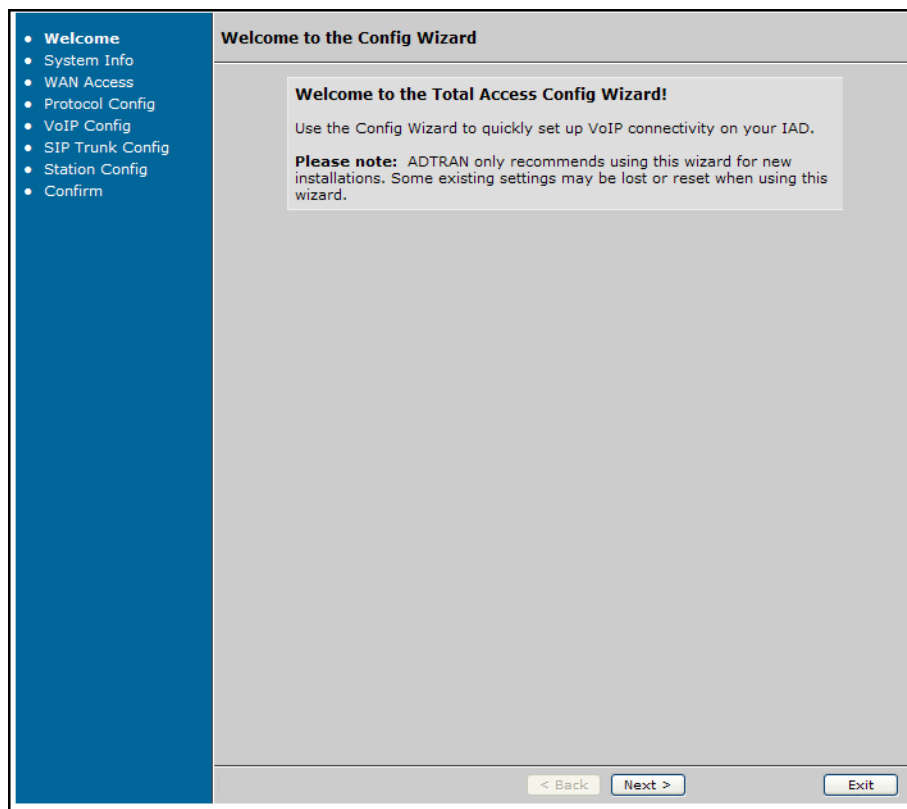
## Using the Configuration Wizard

Once you have logged in, click on **Config Wizard** to display the screen below. Use the buttons at the bottom of the screen or the menu at the top left to navigate the **Config Wizard**.

Use the system's **Config Wizard** utility as an online configuration tool to set up basic (as well as advanced) voice applications. The **Config Wizard** can easily walk you through system setup, voice and data settings, and trunk and station configuration through a series of easy to answer questions. At the end of the wizard, you can review your choices and accept them or make additional changes.



*ADTRAN recommends using this wizard only for new installations. Some existing settings may be lost or reset when using this wizard.*



## Connecting to the Total Access 900 Series

Follow these steps if you are not able to change the PC's IP address in order to access the Web GUI. Change the Total Access 900 IP address to correspond with your network setup. See the steps below for further instruction.

### Connecting to the CRAFT Port

1. Connect a VT100 terminal (or PC with VT100 emulation software) to the Total Access 900 Series **CRAFT** port on the rear panel of your unit using a DB-9 (male) to DB-9 (female) straight-through serial cable.
2. Insert the connector of the provided power cord into the power interface on the side panel of the unit, and plug the cord into a standard electrical outlet.
3. Open a VT100 terminal session and configure the terminal's COM port with the following parameters:
  - Data Rate: 9600
  - Data Bits: 8
  - Parity Bits: None
  - Stop Bits: 1
  - Flow Control: None
4. Press the **<Enter>** key to activate the Adtran Operating System Command Line Interface (AOS CLI). The AOS CLI allows you to access and control the system through a command-driven **CRAFT** connection.
5. Enter **enable** at the **>** prompt, and enter the password when prompted. The default password is **password**.

### Changing the Total Access 900 Series IP Address

1. Enter **config terminal** to enter the Global Configuration mode.
2. Enter **interface ethernet 0/1** to access the Ethernet interface.
3. Enter **ip address 10.10.10.1 255.255.255.0** to assign an IP address to the Ethernet port using a 24-bit subnet mask. Contact your Network Administrator to obtain the IP address (and subnet mask) for your particular configuration.
4. Enter **no shutdown** to activate the interface to pass data.
5. Enter **exit** to exit the Ethernet interface commands and return to the Global Configuration mode.

### Saving the Configuration

1. Enter **exit** to return to the Enable command security mode.
2. At the **#** prompt, enter **copy running-config startup-config** to save the current configuration to memory.
3. Enter **exit** to close the configuration session.



Return to **Using the Web-Based GUI** on page 1 (step 3) to connect to the Total Access 900 Series Web-based GUI.