



Using ADTRAN ISU® Products With the Windows NT® 4.0 Dial Up Networking Application.

Introduction

The information in this Technical Support Note will enable you to setup ADTRAN ISU products into the Dial-Up Networking portion of the Windows NT 4.0 operating system.

Before You Begin

- This is the last in a three-part setup process. This Technical Support Note does **NOT** cover installation of ADTRAN ISU products into the Windows NT 4.0 operating system or device setup into Windows NT 4.0 Remote Access Service (RAS). It assumes that you have already installed ISU support into the Windows NT 4.0 operating system and made the necessary configuration under RAS. For details in doing this see KB Article # 1549 and # 1651.
- With some ADTRAN products like the ADTRAN Express XR® and the Express XRT®, data rates of 230.4 kbps are possible. This data rate will require the installation of a serial card that uses a 16650 UART chip-set. This Technical Support Note assumes that you are using a 16650 UART that is already installed.
- This Technical Support Note does not discuss setup information for special configuration needs.

Configuring Dial-Up Networking for Use with ADTRAN ISU Products

To setup a Dial-Up Networking session in Windows NT 4.0 using an ADTRAN ISU or Express product, open Dial-Up Networking and do the following:

1. Click the New button under the **Phonebook entry to dial:** heading as shown in Figure 1.

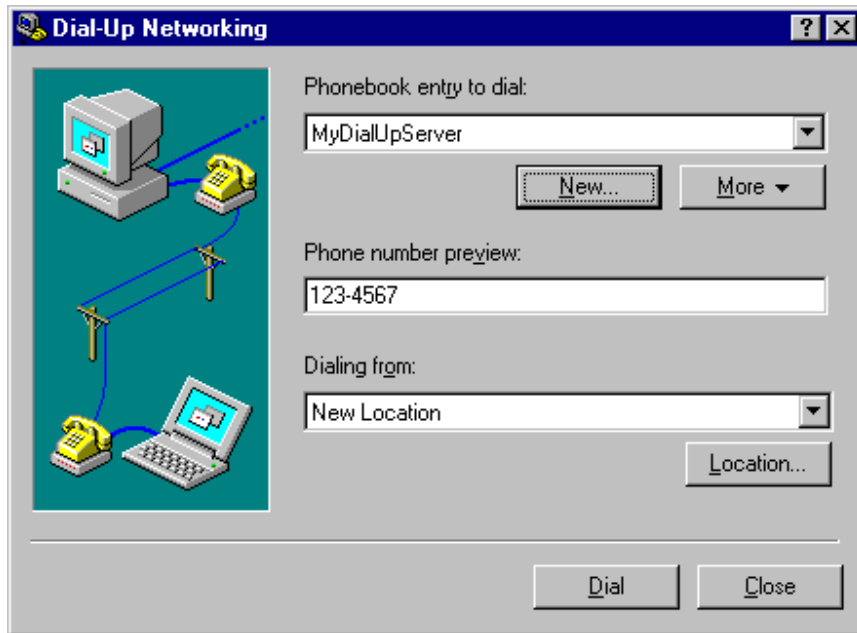


Figure 1: Dial-Up Networking

1. Give the phonebook entry a name in the Phonebook Entry Wizard dialog box as shown in Figure 2, and click the **Next>** button.

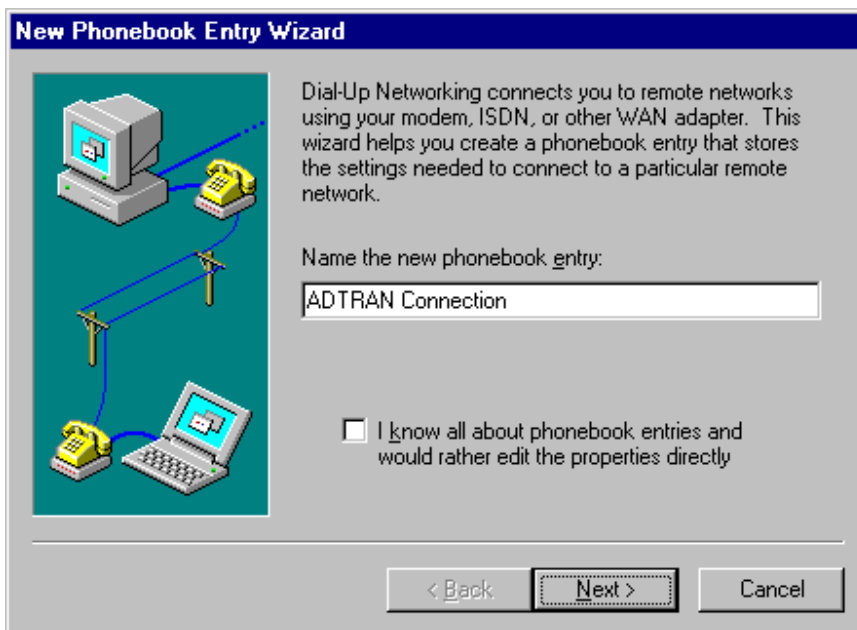


Figure 2: Phonebook Entry Wizard Dialog Box

1. Check the box, **I am calling the Internet**, then click the **Next>** button.

2. Enter the **Phone Number:** to dial (with no hyphens or spaces), and click the **Next>** button.
3. Click the **Finish** button.
4. Click and hold the **More** button and highlight the **Edit entry and modem properties** selection as in Figure 3. Release the mouse button.

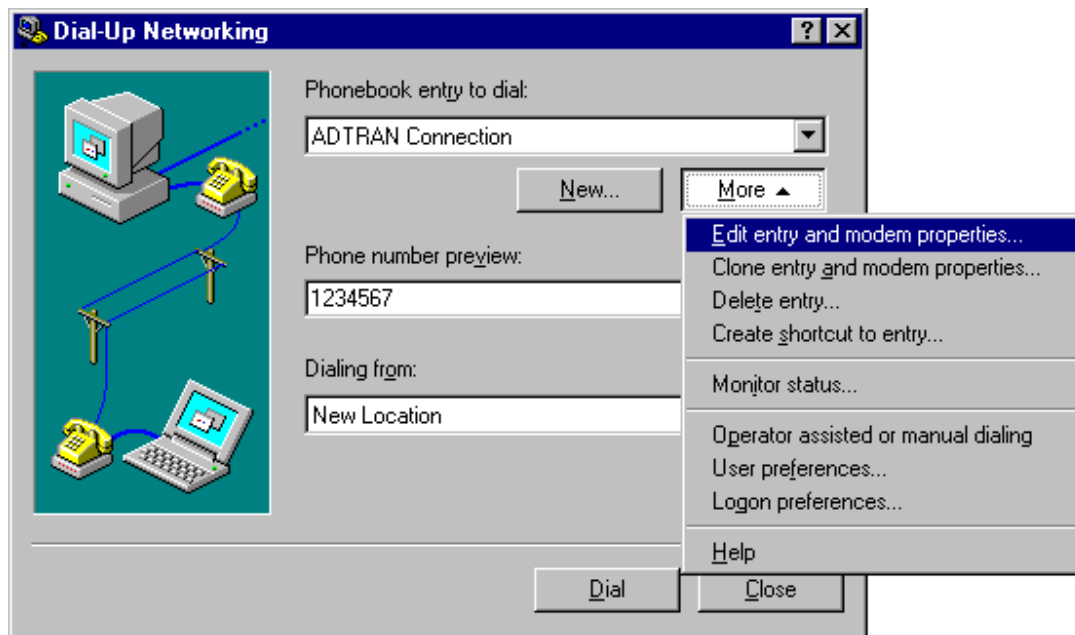


Figure 3: Edit Modem Properties

1. Configure the Phonebook entry as necessary.

NOTE: Under the **Server** tab you will need to un-check the **Enable PPP LCP extensions** check-box and if you are using single link PPP with compression, un-check the **Enable software compression** check-box.

NOTE: Under the **Security** tab it is advised to select the **Accept any authentication including clear text** button, under the **Authentication and encryption policy** section.

2. Click the **Configure** button as in Figure 4.

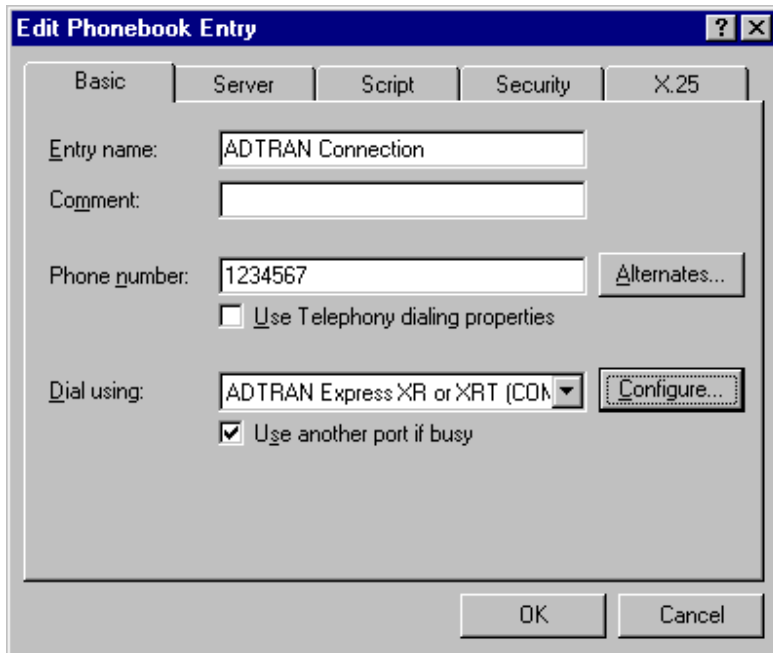


Figure 4: Select and Configure the ADTRAN Device

1. Edit the modem properties as necessary and click the **OK** button (see Figure 5).

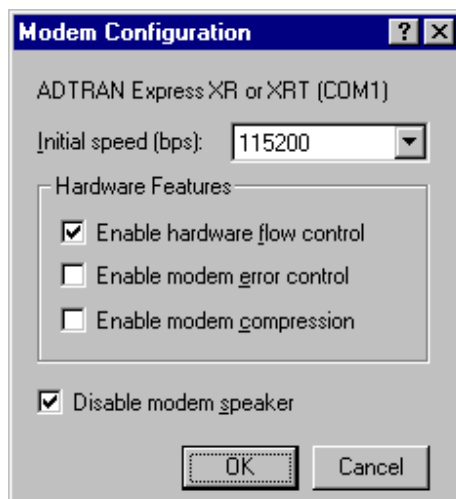


Figure 5: Modem Configuration

1. From the Dial-Up Networking main dialog box click the **Dial** button to connect using the desired ADTRAN ISU device.
2. Enter your **User name:** and **Password:** and click the **OK** button.

You should now be connected to your Internet service provider or your host computer.

Windows NT and Microsoft are registered trademarks of Microsoft Corporation.