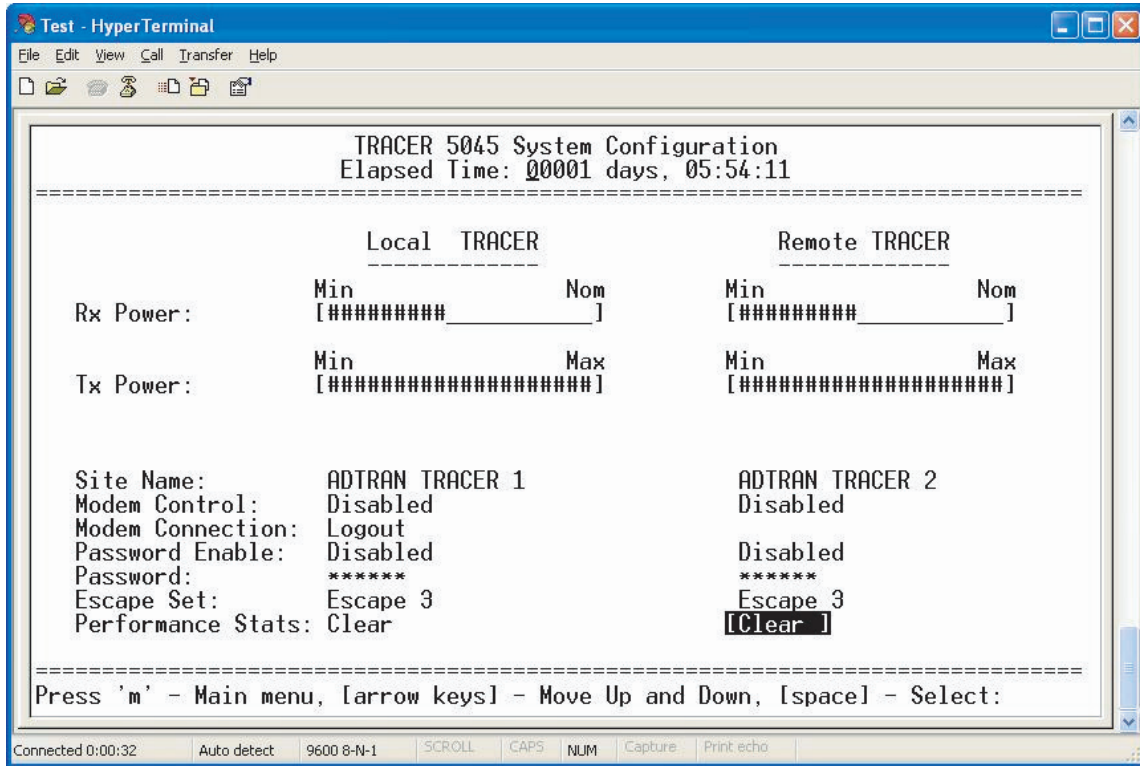


TRACER 5045 SYSTEM MANUAL ADDENDUM

On page 45 of the TRACER 5045 System Manual, please replace Figure 4. TRACER 5045 System Configuration with the following screen:



On page 46, please insert the following section before the >TRACER SYSTEM CONFIGURATION>PERFORMANCE STATS (CLEAR) section:

TRACER SYSTEM CONFIGURATION>ESCAPE SET

Configures the character set used to condition the Ethernet data stream for transmission. Since the TRACER 5045 is a full-duplex radio system, idle characters must be sent across the radio link during times when there is no Ethernet activity. The ESCAPE SET determines what characters are inserted into the data stream to mark the beginning and end of Ethernet data packets so the data can be properly flagged and processed as payload data. The default value is ESCAPE 1. If the Ethernet payload data makes heavy use of a value in the default escape set (as in some implementations of Pseudowire), the escape set should be changed. The control values defined in each escape set are as follows:

Escape Set	Control Values
ESCAPE 1	7F, 7D, 7E
ESCAPE 2	58, 5A, 5B
ESCAPE 3	88, 89, 8A



To insure backward compatibility with older TRACER 5045 units without the ESCAPE SET option, the default value (ESCAPE 1) should be used.



Both ends of the microwave link must be set to the same Escape Set. If both radios are not set to the same value, all Ethernet payload data will be corrupted, and the Ethernet Switch Status menu page will display received-packet errors on the WAN interface.

On page 48 of the TRACER 5045 System Manual, please change the >ETHERNET SWITCH STATUS section to read as follows:

>ETHERNET SWITCH STATUS

Figure 5 shows the Ethernet Switch Status menu page, which displays transmit and receive data statistics for the Ethernet and WAN interfaces (from both the local and remote TRACER 5045 units). The Port 1 through Port 4 interfaces represent the local 10/100BaseT Ethernet physical interfaces, while the WAN interface represents data flowing to the remote unit via the RF link.

On page 48 of the TRACER 5045 System Manual, please replace Figure 6. TRACER Link Performance History with the following screen:

The screenshot shows a HyperTerminal window titled "Test - HyperTerminal" with a menu bar (File, Edit, View, Call, Transfer, Help) and a toolbar. The main display area shows the "Ethernet Switch Status" menu page. The data is organized into two sections: "Local TRACER" and "Remote TRACER". Each section has a header row with "Port 1", "Port 2", "Port 3", "Port 4", and "Wan". Below each header is a row of dashes. The statistics listed are Tx Packets, Tx Packets Dropped, Rx Packets, Rx Packets Dropped, and Rx Packet Errors. At the bottom of the window, there is a status bar with the text "Press 'm' - Main Menu:" and a connection status bar at the very bottom showing "Connected 0:00:10", "Auto detect", "9600 8-N-1", "SCROLL", "CAPS", "NUM", "Capture", and "Print echo".

	Port 1	Port 2	Port 3	Port 4	Wan
Local TRACER					
Tx Packets	2986755	794485	0	0	3772286
Tx Packets Dropped	0	0	0	0	0
Rx Packets	2986760	794485	0	0	3772288
Rx Packets Dropped	0	0	0	0	0
Rx Packet Errors	0	0	0	0	0
Remote TRACER					
Tx Packets	0	0	785205	2951919	3737160
Tx Packets Dropped	0	0	0	0	0
Rx Packets	0	0	785206	2951922	3737163
Rx Packets Dropped	0	0	0	0	0
Rx Packet Errors	0	0	0	0	0